

THE HELENE

1443 W 1010 N



Exterior B

4,360 sq. ft.

Bedrooms

Full Baths

Car Garage

Chelsea



Incredible Experience, Incredible Home!

We trusted the team from Day 1 and couldn't have asked for a better experience. The attention to detail was fantastic, and we felt as if the DWH team had a personal interest in the success of our home. The process was well defined and every team member set very clear expectations. We love every inch of our home, and we'd definitely recommend DWH!

Shane



We're living our fairytale thanks to David Weekley

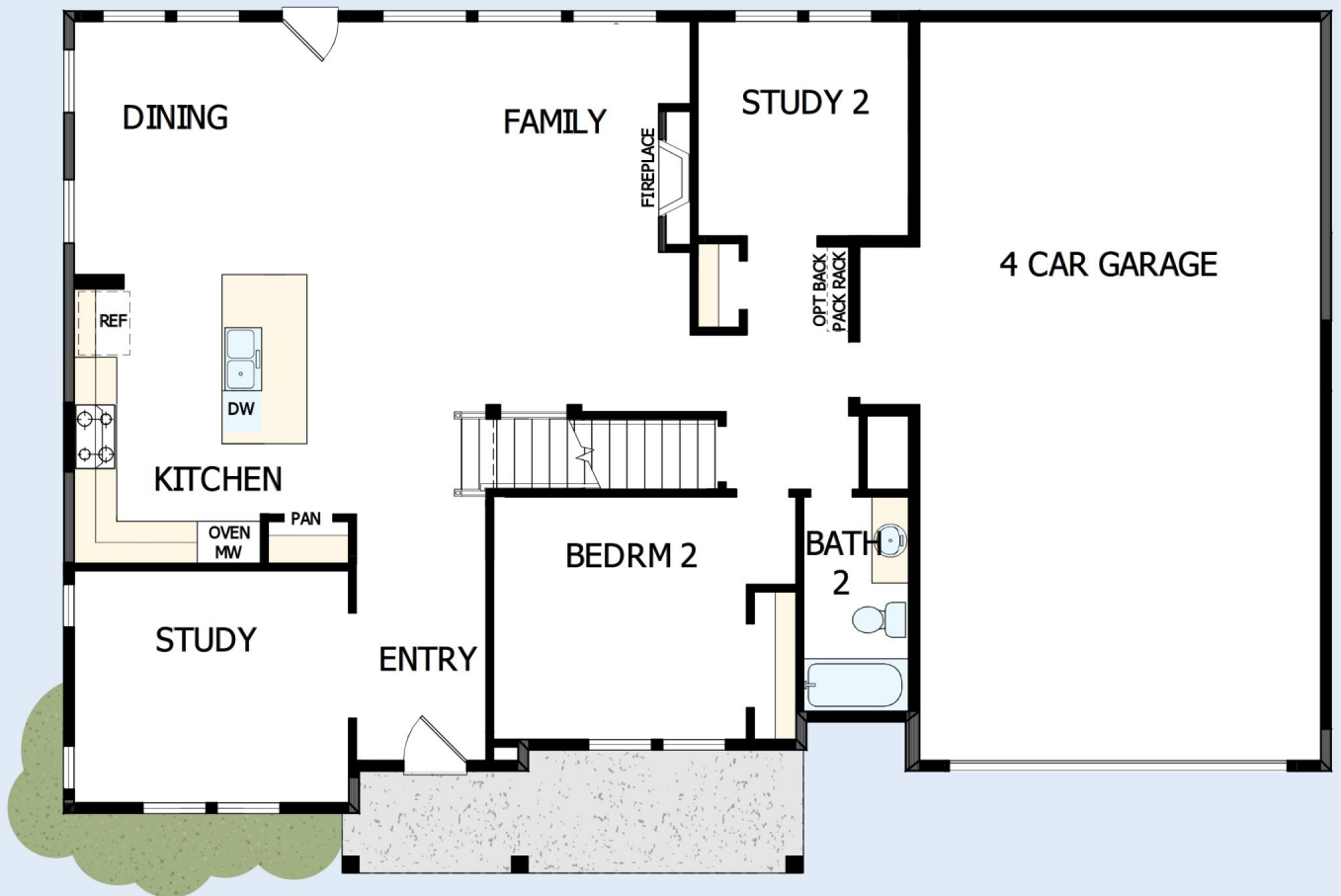
We can't say enough about the level of quality and care we received while building our home. Our builder was with us every step of the way to make sure our every need and desire was being met! The team truly went above and beyond at every turn to give us the home of our dreams! We will definitely recommend David Weekley to anyone looking to build a new home!

**David Weekley
Homes**

THE HELENE

1443 W 1010 N

4,360 sq. ft. • Bedrooms • Full Baths • Car Garage



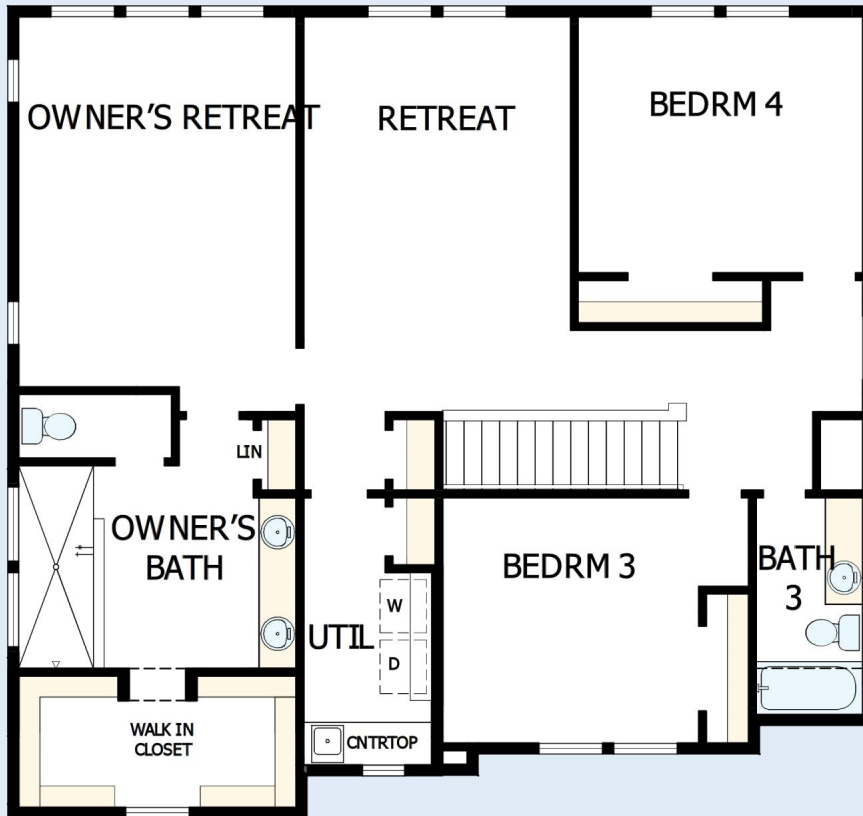
53330019 SLC

9/15/2025

DavidWeekleyHomes.com

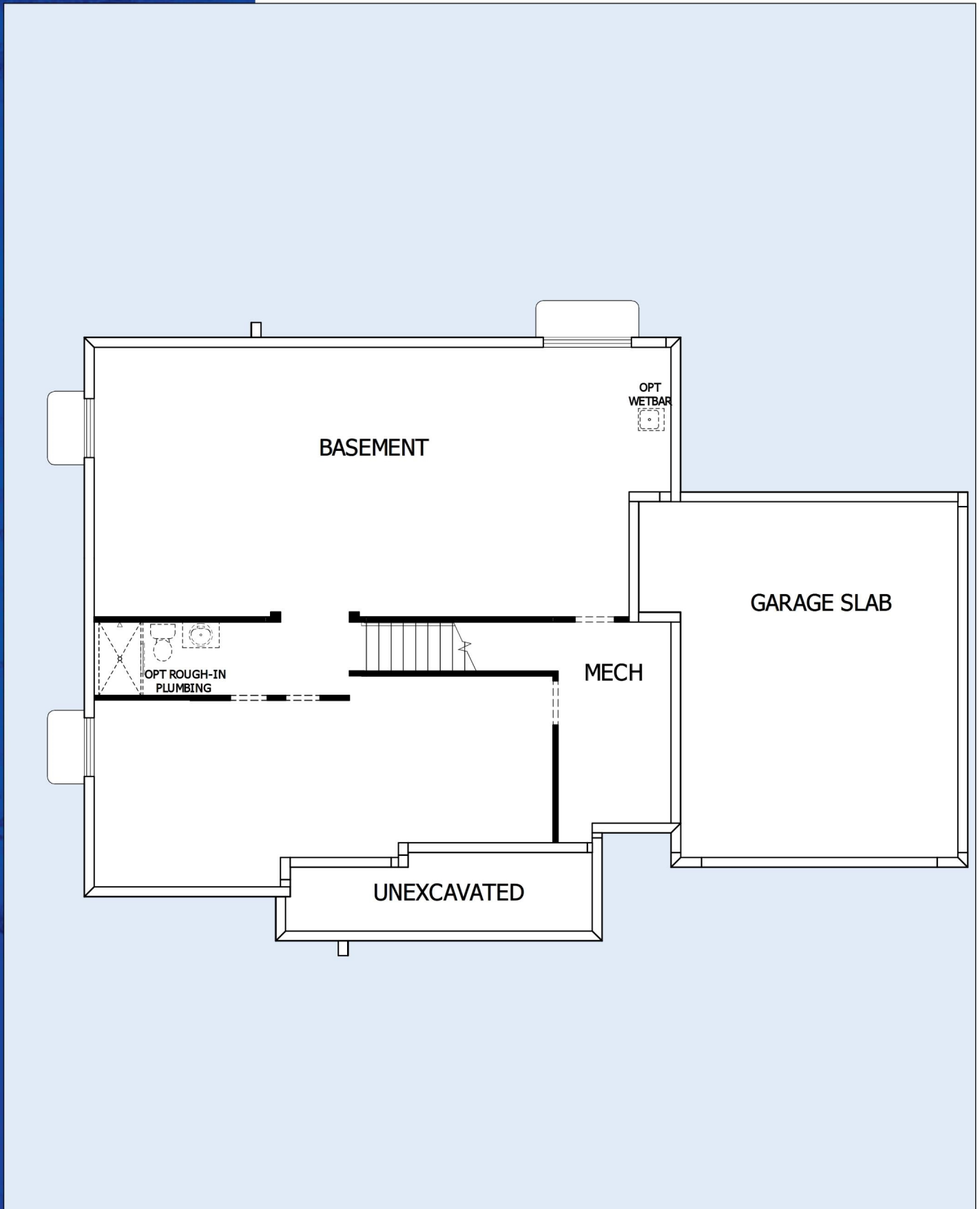
THE HELENE

1443 W 1010 N



THE HELENE

1443 W 1010 N



See a David Weekley Homes Sales Consultant for details. Prices, plans, dimensions, features, specifications, materials, and availability of homes or communities are subject to change without notice or obligation. Illustrations are artist's depictions only and may differ from completed improvements. Copyright © 2025 David Weekley Homes - All Rights Reserved. Pleasant Grove, UT

DavidWeekleyHomes.com

