

THE JASMINE

1804 BEAVERS BEND DRIVE



Exterior B

2,130 sq. ft.

4 Bedrooms

3 Full Baths

3 Car Garage

Shane



We're living our fairytale thanks to David Weekley

We can't say enough about the level of quality and care we received while building our home. Our builder was with us every step of the way to make sure our every need and desire was being met! The team truly went above and beyond at every turn to give us the home of our dreams! We will definitely recommend David Weekley to anyone looking to build a new home!

Crystal W.



Welcome Home

My DWHome's experience has been truly 5-stars! From a floorplan concept, reserving a lot filled with dirt, the homebuilding project, to "Welcome Home", the entire process has been amazing. The team provided regular feedback and were always available to address questions and concerns. I was sold on the quality features. The entire team's availability and service has been exceptional before and after closing. Looking forward to enjoying our new home and neighbors for many years to come!

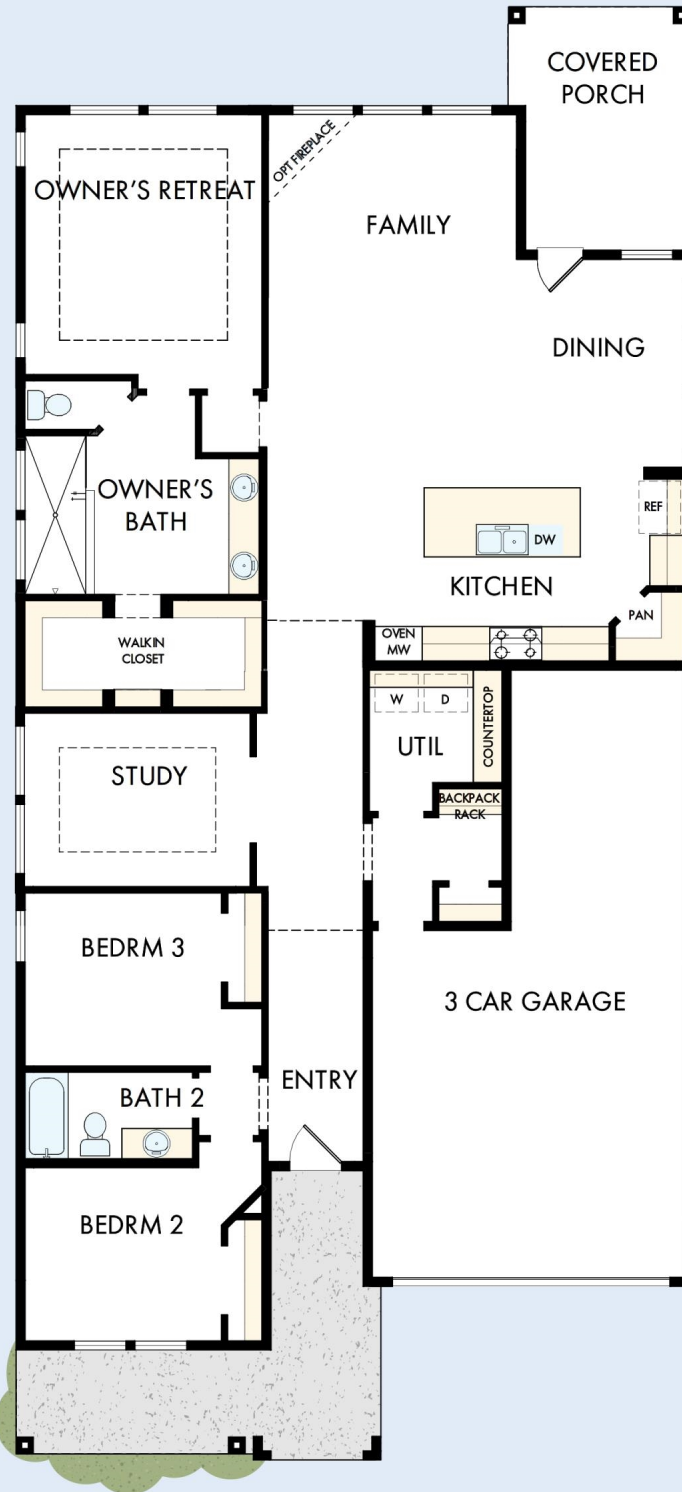
**David Weekley
Homes**

A decorative graphic at the bottom of the David Weekley Homes logo, consisting of a horizontal brushstroke in shades of orange and red.

THE JASMINE

1804 BEAVERS BEND DRIVE

2,130 sq. ft. • 4 Bedrooms • 3 Full Baths • 3 Car Garage



1960082 DAL

4/30/2026

See a David Weekley Homes Sales Consultant for details. Prices, plans, dimensions, features, specifications, materials, and availability of homes or communities are subject to change without notice or obligation. Illustrations are artist's depictions only and may differ from completed improvements. Copyright © 2026 David Weekley Homes - All Rights Reserved. Celina, TX

DavidWeekleyHomes.com

