

# THE LAVENDER

843 IRON WILLOW LOOP



Exterior E

3,091 sq. ft.

4 Bedrooms

3 Full Baths

2 Car Garage

## Sandra A.



### Best Builder Around

We have loved DW homes ever since our mother bought one. The quality of their work, attention to detail and willingness to respond to questions is top notch. The biggest thing we love about DW is their focus on customer service. They are not your typical builder who meets with you to get a check and forgets about you till walk thru. They are your partner through the entire process. Each step of the way they know they are building your dream house and really treat you like family. I would recommend them hands down. My husband sells real estate and has dealt with numerous builders around town. He always directs his clients to DW and signs their praises.

## Rich C.



### Wonderful Experience!

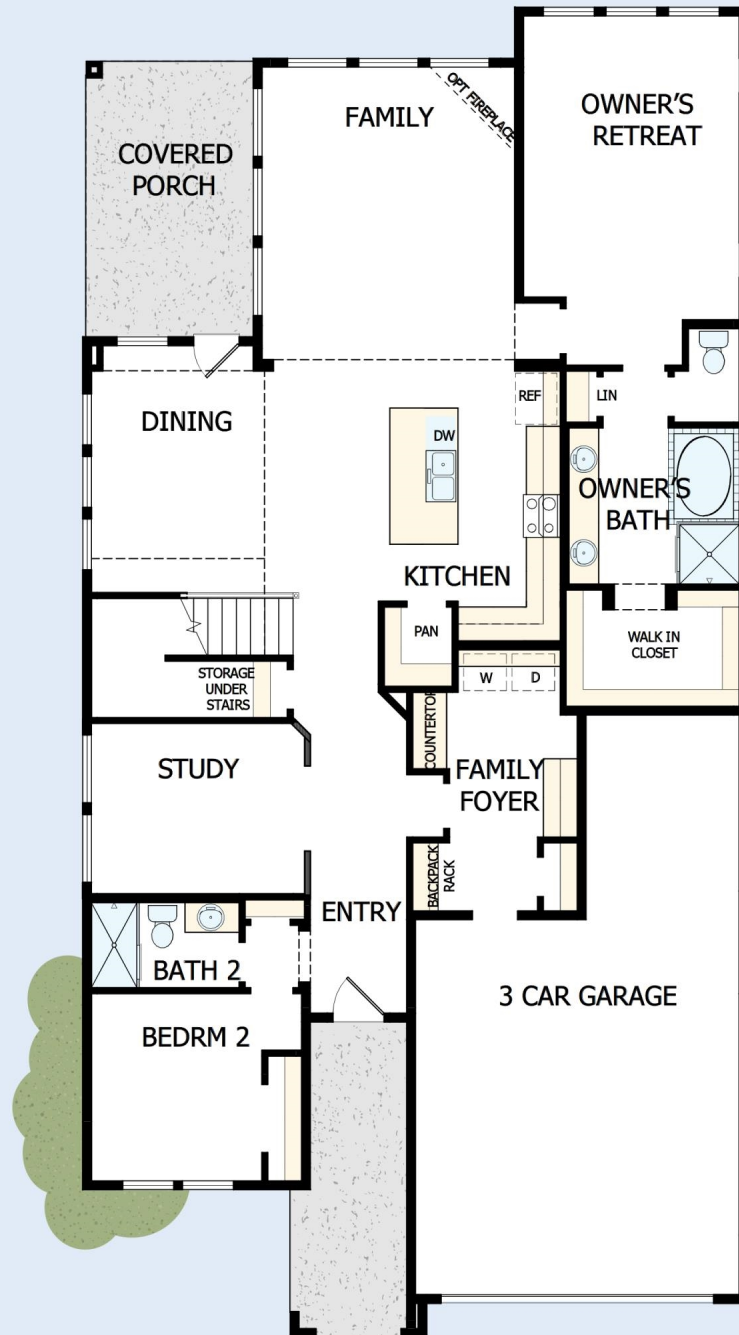
If there is anything that sets David Weekley apart from other builders it is their customer service. I felt like a member of the family from the first time I walked into the model, to when I received my keys and saw the wonderful housewarming presents that were left for me, up to the present when I see my salesman in the neighborhood. I felt like they really took the time to understand what I was looking for and then came through with my dream home. I would highly recommend David Weekley to anyone looking to buy and/or build a home.

David Weekley  
Homes

# THE LAVENDER

843 IRON WILLOW LOOP

3,091 sq. ft. • 4 Bedrooms • 3 Full Baths • 2 Car Garage



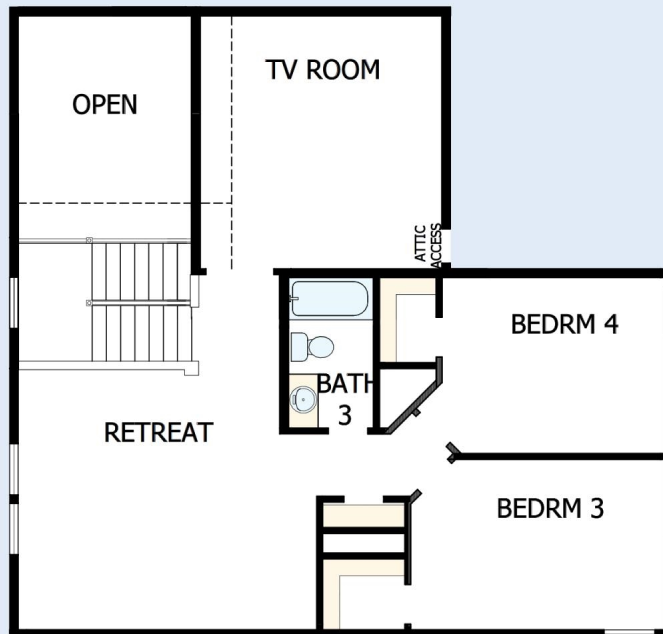
22330030 AUS

7/9/2025

DavidWeekleyHomes.com

# THE LAVENDER

843 IRON WILLOW LOOP



See a David Weekley Homes Sales Consultant for details. Prices, plans, dimensions, features, specifications, materials, and availability of homes or communities are subject to change without notice or obligation. Illustrations are artist's depictions only and may differ from completed improvements. Copyright © 2025 David Weekley Homes - All Rights Reserved. Dripping Springs, TX

**DavidWeekleyHomes.com**