

THE ZEPPELIN

3215 VOYAGER AVENUE



Exterior B

2,120 sq. ft.

3 Bedrooms

2 Full Baths

1 Half Bath

2 Car Garage

Shane



We're living our fairytale thanks to David Weekley

We can't say enough about the level of quality and care we received while building our home. Our builder was with us every step of the way to make sure our every need and desire was being met! The team truly went above and beyond at every turn to give us the home of our dreams! We will definitely recommend David Weekley to anyone looking to build a new home!

Perez Family



Best Homebuying Experience Ever

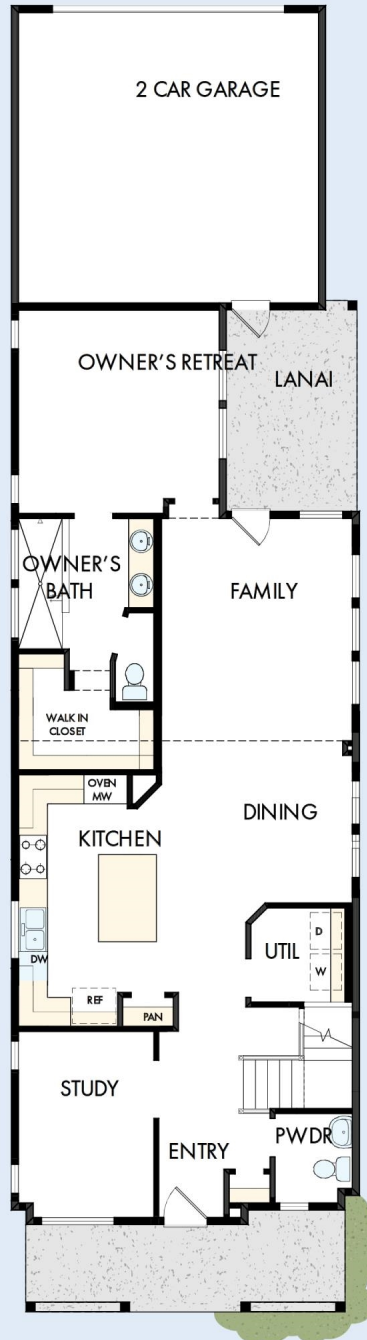
We have had several homes built in the past by several homebuilders. Our experience with David Weekley was the best we have ever had. The attention to detail and the customer service were exceptional. Both our sales person and Project Manager kept us well informed and treated us like family. Thanks David Weekley

**David Weekley
Homes**

THE ZEPPELIN

3215 VOYAGER AVENUE

2,120 sq. ft. • 3 Bedrooms • 2 Full Baths • 1 Half Bath • 2 Car Garage



30094219 ORL

2/26/2026

DavidWeekleyHomes.com

THE ZEPPELIN

3215 VOYAGER AVENUE



See a David Weekley Homes Sales Consultant for details.
Prices, plans, dimensions, features, specifications, materials,
and availability of homes or communities are subject to
change without notice or obligation. Illustrations are artist's
depictions only and may differ from completed improvements.
Copyright © 2026 David Weekley Homes - All Rights Reserved.
St. Cloud, FL

DavidWeekleyHomes.com

