

# THE PICKNEY

396 NORTH VILLAGE PARKWAY



Exterior B

2,453 sq. ft.

4 Bedrooms

3 Full Baths

2 Car Garage

## Greg and Jane



### Exceptional service and experience!

We have been fortunate enough to build several new homes and this was by far the best experience that we've encountered. We actually debated whether or not we wanted to go through the home building process again or simply purchase a pre-owned home or a finished new home. So pleased we built! Our Weekley team (sales associate, design consultant and builder) was very professional, courteous, attentive, responsive and pro-active from beginning to end. They've all become our adopted kids! Great overall experience!

## Sandra A.



### Best Builder Around

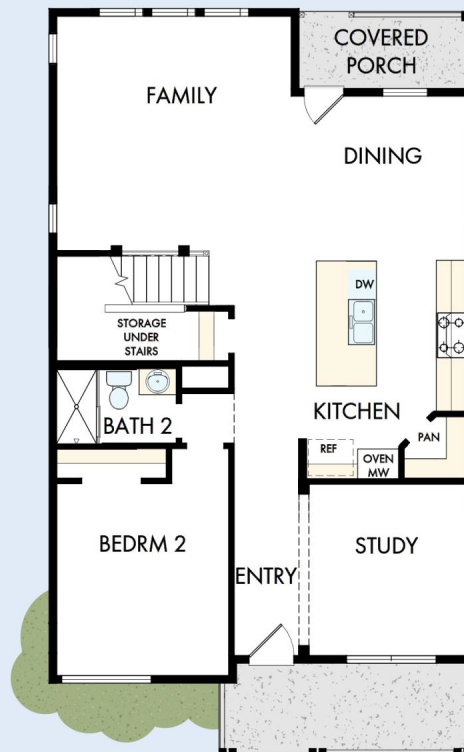
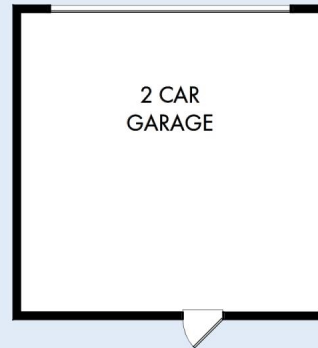
We have loved DW homes ever since our mother bought one. The quality of their work, attention to detail and willingness to respond to questions is top notch. The biggest thing we love about DW is their focus on customer service. They are not your typical builder who meets with you to get a check and forgets about you till walk thru. They are your partner through the entire process. Each step of the way they know they are building your dream house and really treat you like family. I would recommend them hands down. My husband sells real estate and has dealt with numerous builders around town. He always directs his clients to DW and signs their praises.

David Weekley  
Homes

# THE PICKNEY

396 NORTH VILLAGE PARKWAY

2,453 sq. ft. • 4 Bedrooms • 3 Full Baths • 2 Car Garage



32884509 RAL

4/25/2026

# THE PICKNEY

396 NORTH VILLAGE PARKWAY



See a David Weekley Homes Sales Consultant for details.  
Prices, plans, dimensions, features, specifications, materials,  
and availability of homes or communities are subject to  
change without notice or obligation. Illustrations are artist's  
depictions only and may differ from completed improvements.  
Copyright © 2026 David Weekley Homes - All Rights Reserved.  
Pittsboro, NC

**DavidWeekleyHomes.com**

