

# THE WHIMSYCAL

3088 EXPEDITION DR



## Exterior A

2,430 sq. ft.

3 Bedrooms

2 Full Baths

2 Car Garage

### Greg and Jane



#### Exceptional service and experience!

We have been fortunate enough to build several new homes and this was by far the best experience that we've encountered. We actually debated whether or not we wanted to go through the home building process again or simply purchase a pre-owned home or a finished new home. So pleased we built! Our Weekley team (sales associate, design consultant and builder) was very professional, courteous, attentive, responsive and pro-active from beginning to end. They've all become our adopted kids! Great overall experience!

### Meg S.



#### Truly treated us like family!!!

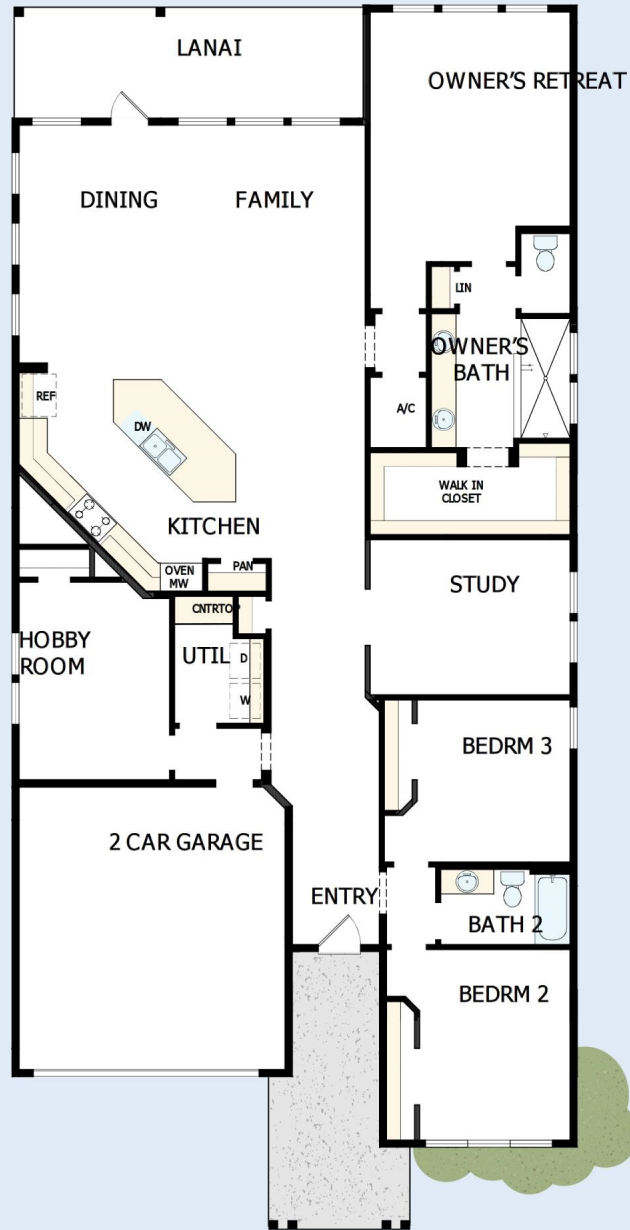
We enjoyed every part of the home building process. It was amazing! Our builder was always keeping us informed and really went above and beyond to ensure that we love our home. Our warranty rep is outstanding and continues to take care of our every need. I couldn't have asked for a better experience. Our builder and warranty rep continue to be there for us as a family. While our interactions with the DW Family have been highly professional, we are also lucky enough to be able to call them some of our greatest friends! Wouldn't change a thing!

David Weekley  
Homes

# THE WHIMSICAL

3088 EXPEDITION DR

2,430 sq. ft. • 3 Bedrooms • 2 Full Baths • 2 Car Garage



30083125 ORL

1/14/2025

See a David Weekley Homes Sales Consultant for details. Prices, plans, dimensions, features, specifications, material and availability of homes or communities are subject to change without notice or obligation. Illustrations are artist's depictions only and may differ from completed improvements. Copyright © 2025 David Weekley Homes - All Rights Reserved. St. Cloud, FL

DavidWeekleyHomes.com

