

# THE BRADEN

1507 PARK PATH DRIVE



Exterior E

2,337 sq. ft.

3 Bedrooms

2 Full Baths

1 Half Bath

2 Car Garage

**Rich C.**



### **Wonderful Experience!**

If there is anything that sets David Weekley apart from other builders it is their customer service. I felt like a member of the family from the first time I walked into the model, to when I received my keys and saw the wonderful housewarming presents that were left for me, up to the present when I see my salesman in the neighborhood. I felt like they really took the time to understand what I was looking for and then came through with my dream home. I would highly recommend David Weekley to anyone looking to buy and/or build a home.

**Chelsea**



### **Incredible Experience, Incredible Home!**

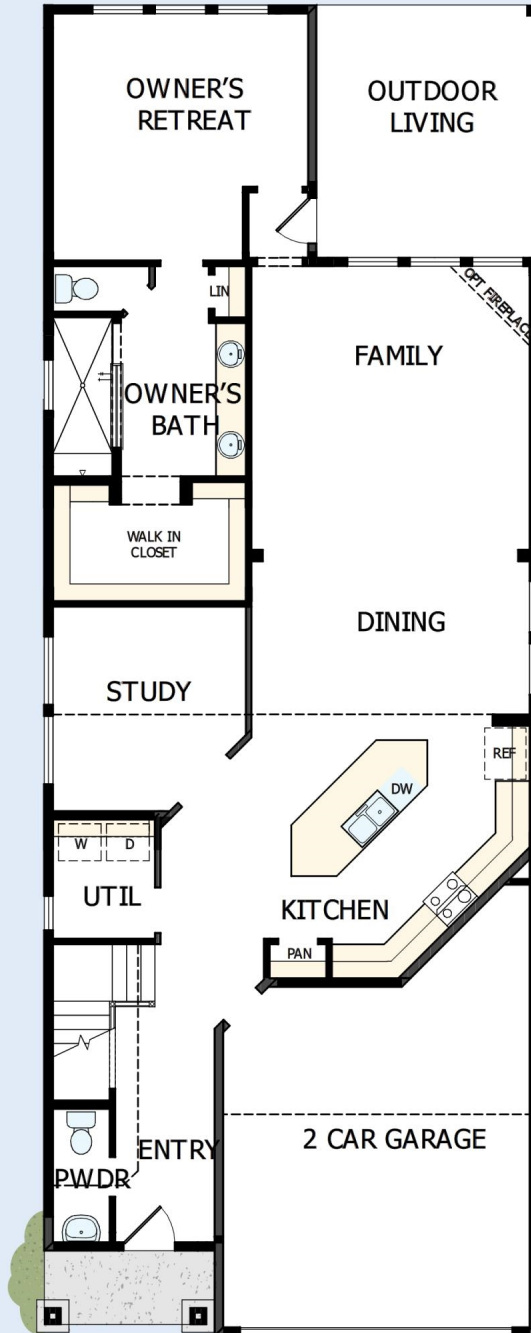
We trusted the team from Day 1 and couldn't have asked for a better experience. The attention to detail was fantastic, and we felt as if the DWH team had a personal interest in the success of our home. The process was well defined and every team member set very clear expectations. We love every inch of our home, and we'd definitely recommend DWH!

**David Weekley  
Homes**

# THE BRADEN

1507 PARK PATH DRIVE

2,337 sq. ft. • 3 Bedrooms • 2 Full Baths • 1 Half Bath • 2 Car Garage



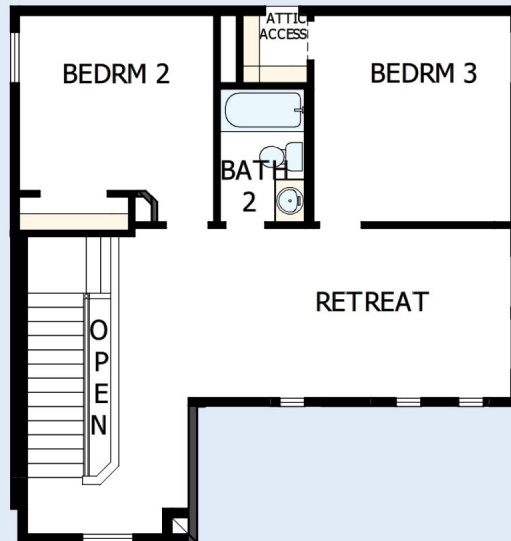
14590050 HOU

5/6/2024

DavidWeekleyHomes.com

# THE BRADEN

1507 PARK PATH DRIVE



See a David Weekley Homes Sales Consultant for details. Prices, plans, dimensions, features, specifications, materials, and availability of homes or communities are subject to change without notice or obligation. Illustrations are artist's depictions only and may differ from completed improvements. Copyright © 2024 David Weekley Homes - All Rights Reserved. Missouri City, TX

**DavidWeekleyHomes.com**

