

# THE CADENCE

1406 AUTUMN LAKE DRIVE SW



## Exterior A

1,893 sq. ft.

3 Bedrooms

2 Full Baths

2 Car Garage

### Greg and Jane



#### Exceptional service and experience!

We have been fortunate enough to build several new homes and this was by far the best experience that we've encountered. We actually debated whether or not we wanted to go through the home building process again or simply purchase a pre-owned home or a finished new home. So pleased we built! Our Weekley team (sales associate, design consultant and builder) was very professional, courteous, attentive, responsive and pro-active from beginning to end. They've all become our adopted kids! Great overall experience!

### Chelsea



#### Incredible Experience, Incredible Home!

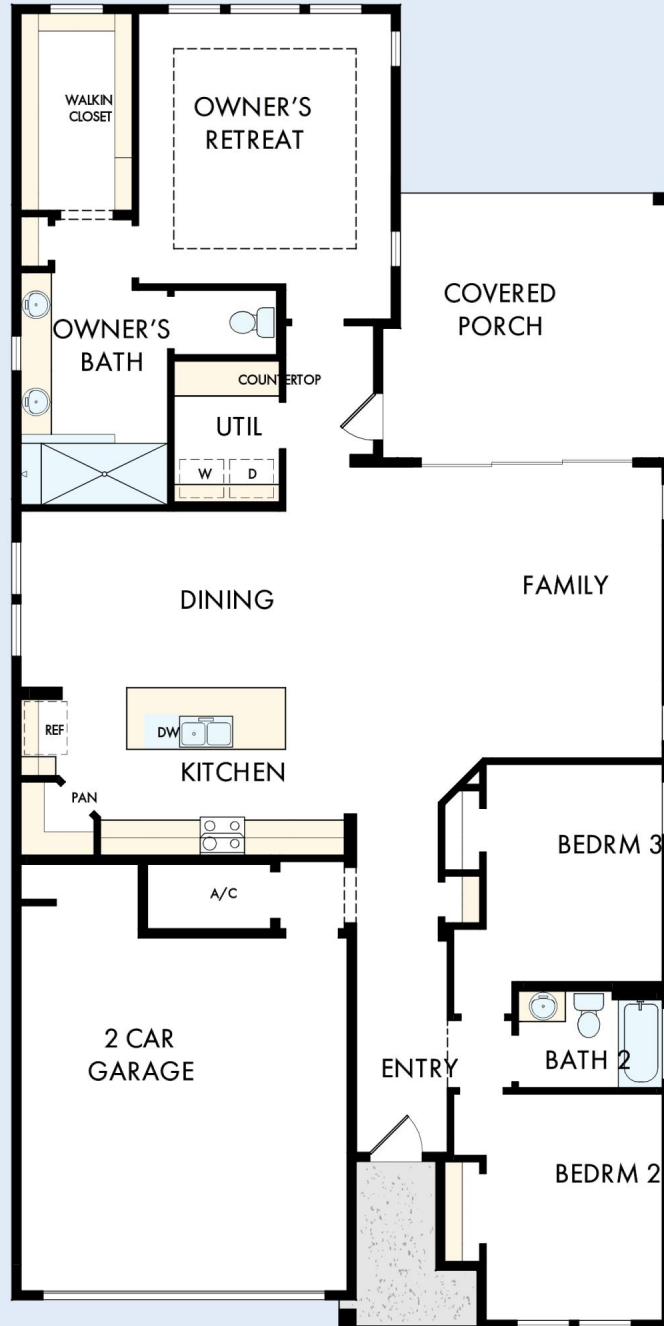
We trusted the team from Day 1 and couldn't have asked for a better experience. The attention to detail was fantastic, and we felt as if the DWH team had a personal interest in the success of our home. The process was well defined and every team member set very clear expectations. We love every inch of our home, and we'd definitely recommend DWH!

**Encore**  
by David Weekley Homes

# THE CADENCE

1406 AUTUMN LAKE DRIVE SW

1,893 sq. ft. • 3 Bedrooms • 2 Full Baths • 2 Car Garage



46910094 ATL

6/30/2026

See a David Weekley Homes Sales Consultant for details. Prices, plans, dimensions, features, specifications, materials, and availability of homes or communities are subject to change without notice or obligation. Illustrations are artist's depictions only and may differ from completed improvements. Copyright © 2026 David Weekley Homes - All Rights Reserved. Gainesville, GA

**Encore**  
by David Weekley Homes

