

THE ESCHER

1243 E AMARYLLIS WAY



Exterior B

4,716 sq. ft.

6 Bedrooms

4 Full Baths

1 Half Bath

3 Car Garage

Meg S.



Truly treated us like family!!!

We enjoyed every part of the home building process. It was amazing! Our builder was always keeping us informed and really went above and beyond to ensure that we love our home. Our warranty rep is outstanding and continues to take care of our every need. I couldn't have asked for a better experience. Our builder and warranty rep continue to be there for us as a family. While our interactions with the DW Family have been highly professional, we are also lucky enough to be able to call them some of our greatest friends! Wouldn't change a thing!

Crystal W.



Welcome Home

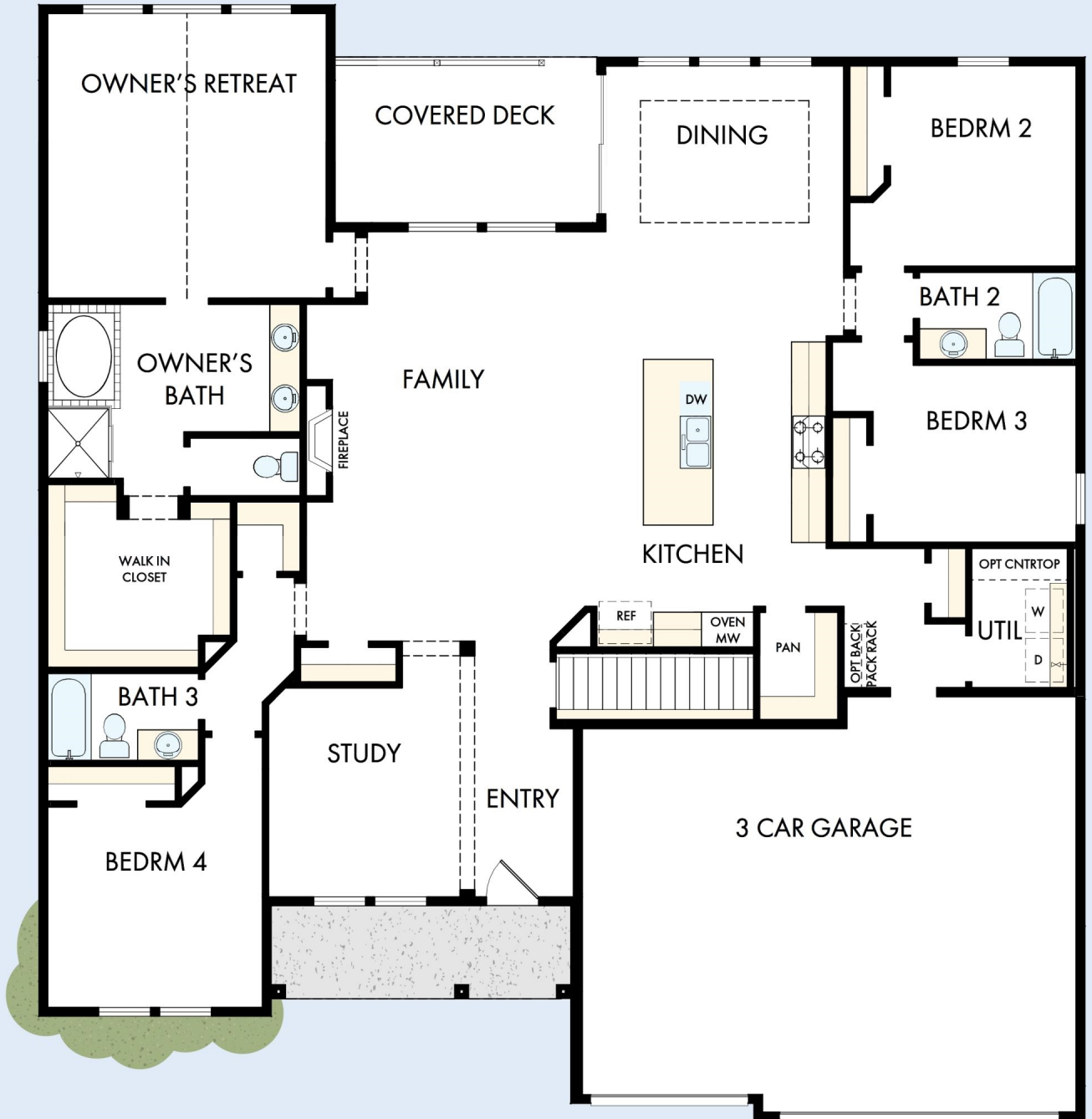
My DWHomes experience has been truly 5-stars! From a floorplan concept, reserving a lot filled with dirt, the homebuilding project, to "Welcome Home", the entire process has been amazing. The team provided regular feedback and were always available to address questions and concerns. I was sold on the quality features. The entire team's availability and service has been exceptional before and after closing. Looking forward to enjoying our new home and neighbors for many years to come!

**David Weekley
Homes**

THE ESCHER

1243 E AMARYLLIS WAY

4,716 sq. ft. • 6 Bedrooms • 4 Full Baths • 1 Half Bath • 3 Car Garage



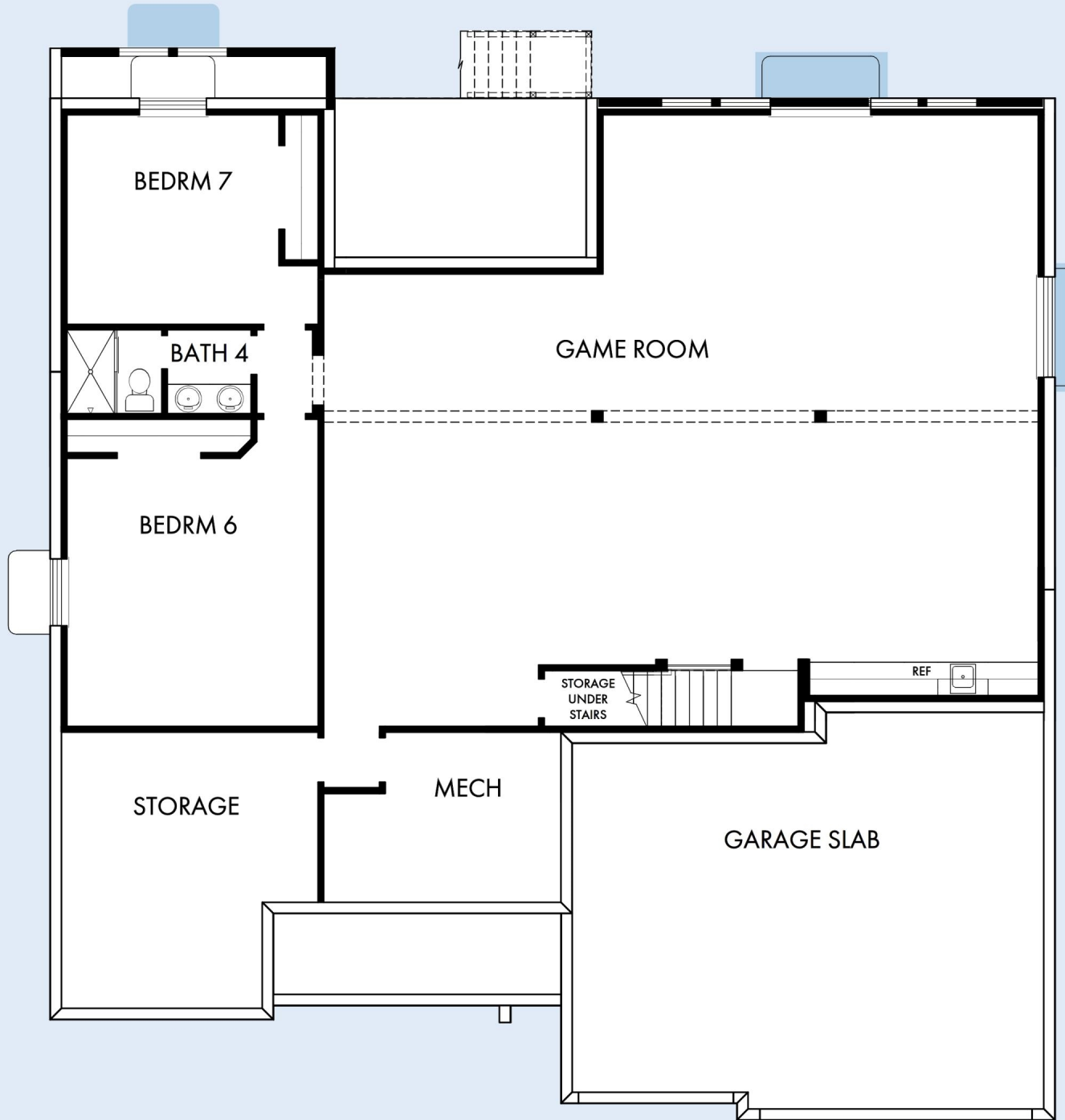
53390550 SLC

6/18/2026

DavidWeekleyHomes.com

THE ESCHER

1243 E AMARYLLIS WAY



See a David Weekley Homes Sales Consultant for details. Prices, plans, dimensions, features, specifications, materials, and availability of homes or communities are subject to change without notice or obligation. Illustrations are artist's depictions only and may differ from completed improvements. Copyright © 2026 David Weekley Homes - All Rights Reserved. Layton, UT

DavidWeekleyHomes.com

