

# THE SUMMERLYN

4381 ROUSH AVE



Exterior A

1,390 sq. ft.

2 Bedrooms

2 Full Baths

1 Half Bath

1 Car Garage

**Shane**



### **We're living our fairytale thanks to David Weekley**

We can't say enough about the level of quality and care we received while building our home. Our builder was with us every step of the way to make sure our every need and desire was being met! The team truly went above and beyond at every turn to give us the home of our dreams! We will definitely recommend David Weekley to anyone looking to build a new home!

**Crystal W.**



### **Welcome Home**

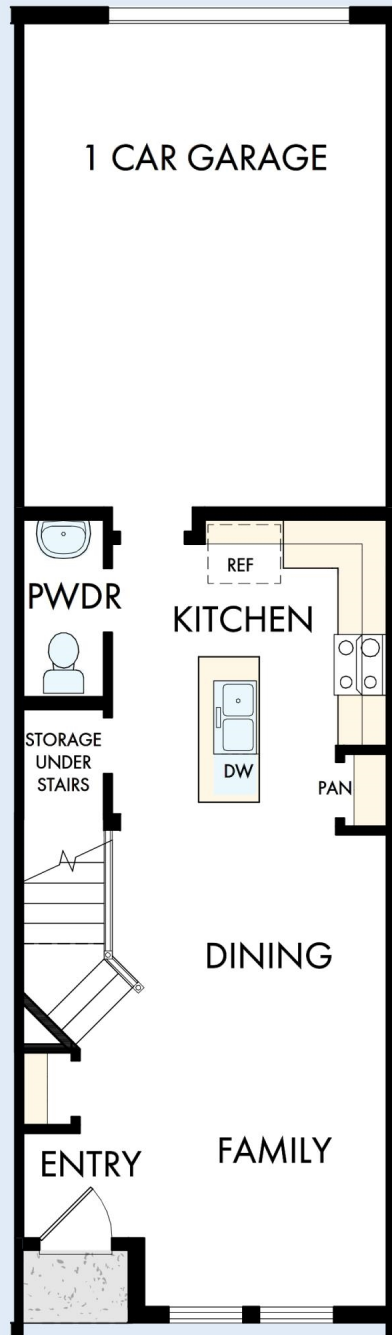
My DWHomes experience has been truly 5-stars! From a floorplan concept, reserving a lot filled with dirt, the homebuilding project, to "Welcome Home", the entire process has been amazing. The team provided regular feedback and were always available to address questions and concerns. I was sold on the quality features. The entire team's availability and service has been exceptional before and after closing. Looking forward to enjoying our new home and neighbors for many years to come!

**David Weekley  
Homes**

# THE SUMMERLYN

4381 ROUSH AVE

1,390 sq. ft. • 2 Bedrooms • 2 Full Baths • 1 Half Bath • 1 Car Garage



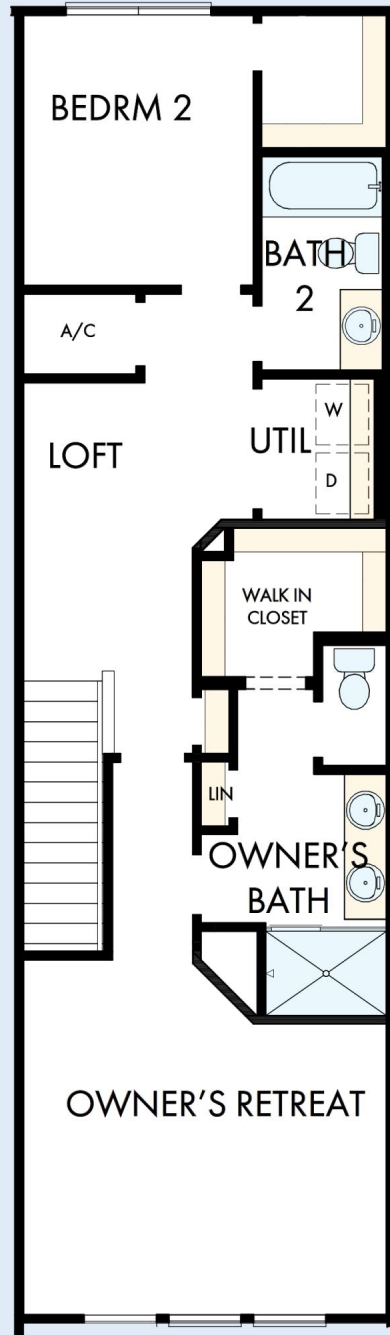
30270024 ORL

3/19/2026

DavidWeekleyHomes.com

# THE SUMMERLYN

4381 ROUSH AVE



See a David Weekley Homes Sales Consultant for details.  
Prices, plans, dimensions, features, specifications, materials,  
and availability of homes or communities are subject to  
change without notice or obligation. Illustrations are artist's  
depictions only and may differ from completed improvements.  
Copyright © 2026 David Weekley Homes - All Rights Reserved.  
Orlando, FL

**DavidWeekleyHomes.com**

