

# THE WISTERIA

3235 WIND KNOT WAY



Exterior C

3,086 sq. ft.

---

4 Bedrooms

---

3 Full Baths

---

1 Half Bath

---

3 Car Garage

**Lauren L.**



### **Home is where the heart is.**

Years we waited to buy a house. Painful years of raising children in someone else's home. Years I got to ponder what it would be like to have something of my own. I envisioned my children sitting in their home, playing in their rooms, running through their yard...and the days of waiting were over, all of my research paid off. We bought the house of my dreams and were given the best sales associate and builder, down to my warranty specialist. Everything was easy and seamless. I felt like we were working together, like a team. Now, I have a beautiful house that I know was built with integrity. I could not be more grateful.

**Shane**



### **We're living our fairytale thanks to David Weekley**

We can't say enough about the level of quality and care we received while building our home. Our builder was with us every step of the way to make sure our every need and desire was being met! The team truly went above and beyond at every turn to give us the home of our dreams! We will definitely recommend David Weekley to anyone looking to build a new home!

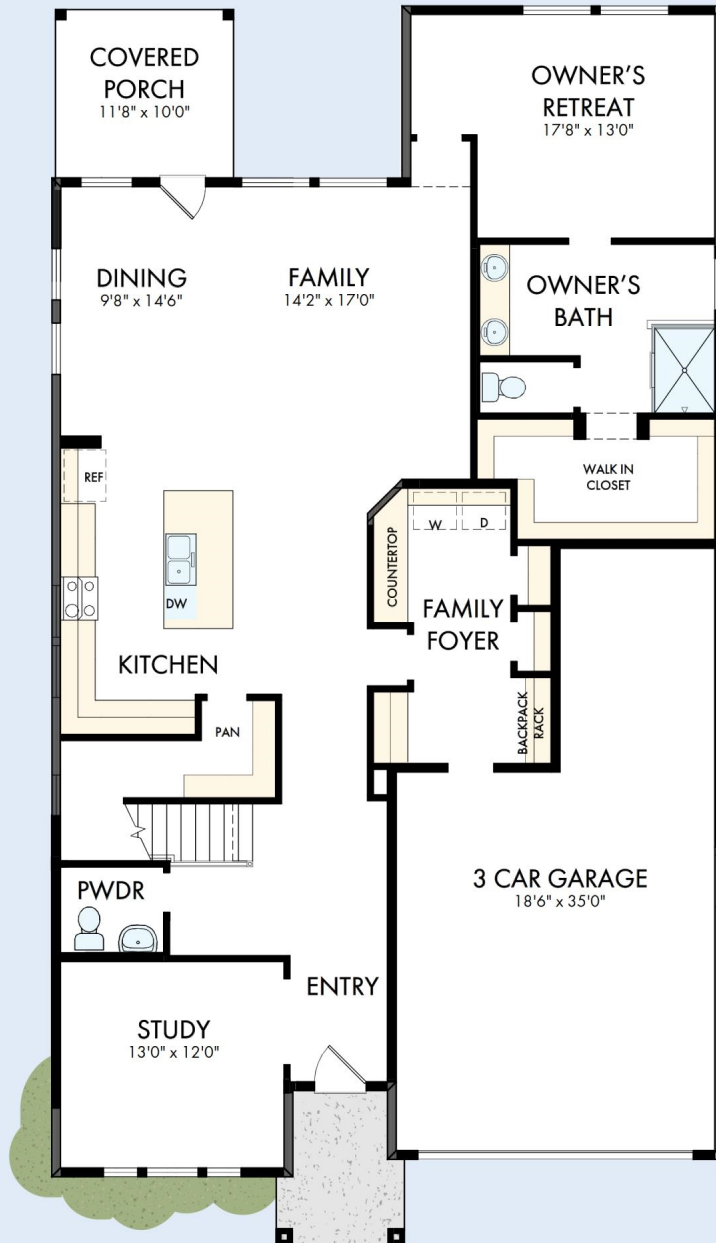
**David Weekley  
Homes**

A graphic element at the bottom of the David Weekley Homes logo, consisting of a horizontal brushstroke in shades of orange and red.

# THE WISTERIA

3235 WIND KNOT WAY

3,086 sq. ft. • 4 Bedrooms • 3 Full Baths • 1 Half Bath • 3 Car Garage



19380132 DAL

6/1/2026

DavidWeekleyHomes.com

# THE WISTERIA

3235 WIND KNOT WAY



See a David Weekley Homes Sales Consultant for details. Prices, plans, dimensions, features, specifications, materials, and availability of homes or communities are subject to change without notice or obligation. Illustrations are artist's depictions only and may differ from completed improvements. Copyright © 2026 David Weekley Homes - All Rights Reserved. Royse City, TX

**DavidWeekleyHomes.com**

