

THE PERIWINKLE

7018 SALT DOME DRIVE



Exterior B

1,925 sq. ft.

3 Bedrooms

2 Full Baths

2 Car Garage

Perez Family



Best Homebuying Experience Ever

We have had several homes built in the past by several homebuilders. Our experience with David Weekley was the best we have ever had. The attention to detail and the customer service were exceptional. Both our sales person and Project Manager kept us well informed and treated us like family. Thanks David Weekley

Meg S.



Truly treated us like family!!!

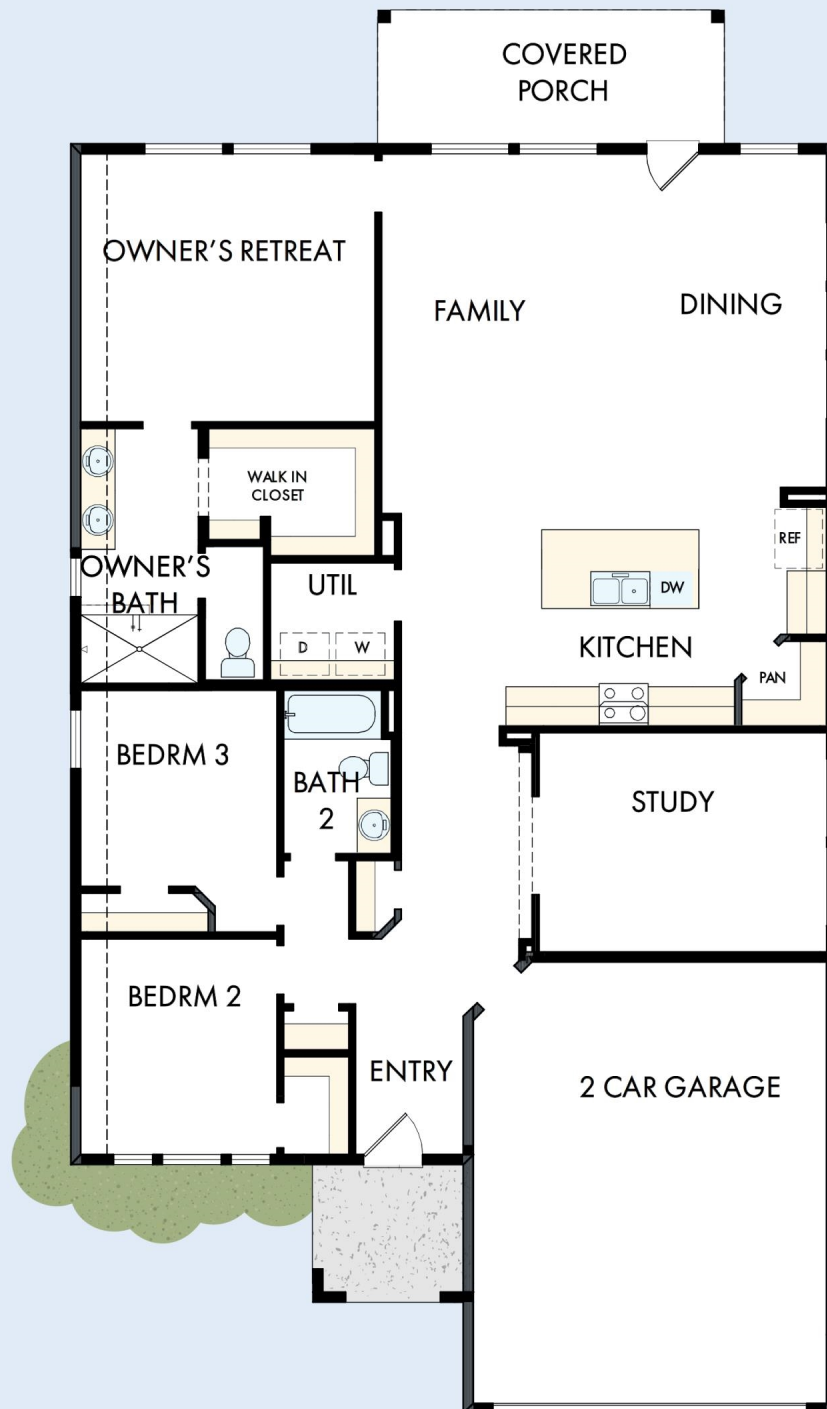
We enjoyed every part of the home building process. It was amazing! Our builder was always keeping us informed and really went above and beyond to ensure that we love our home. Our warranty rep is outstanding and continues to take care of our every need. I couldn't have asked for a better experience. Our builder and warranty rep continue to be there for us as a family. While our interactions with the DW Family have been highly professional, we are also lucky enough to be able to call them some of our greatest friends! Wouldn't change a thing!

David Weekley
Homes

THE PERIWINKLE

7018 SALT DOME DRIVE

1,925 sq. ft. • 3 Bedrooms • 2 Full Baths • 2 Car Garage



70260016 HOU

1/9/2026

See a David Weekley Homes Sales Consultant for details.
Prices, plans, dimensions, features, specifications, materials,
and availability of homes or communities are subject to
change without notice or obligation. Illustrations are artist's
depictions only and may differ from completed improvements.
Copyright © 2026 David Weekley Homes - All Rights Reserved.
League City, TX

DavidWeekleyHomes.com