

THE HOLLINGER

53 ANCIENT SPRINGS LANE

2,454 sq. ft.

4 Bedrooms

2 Full Baths

1 Half Bath

2 Car Garage

David Weekley
Homes

Chelsea



Incredible Experience, Incredible Home!

We trusted the team from Day 1 and couldn't have asked for a better experience. The attention to detail was fantastic, and we felt as if the DWH team had a personal interest in the success of our home. The process was well defined and every team member set very clear expectations. We love every inch of our home, and we'd definitely recommend DWH!

Sandra A.



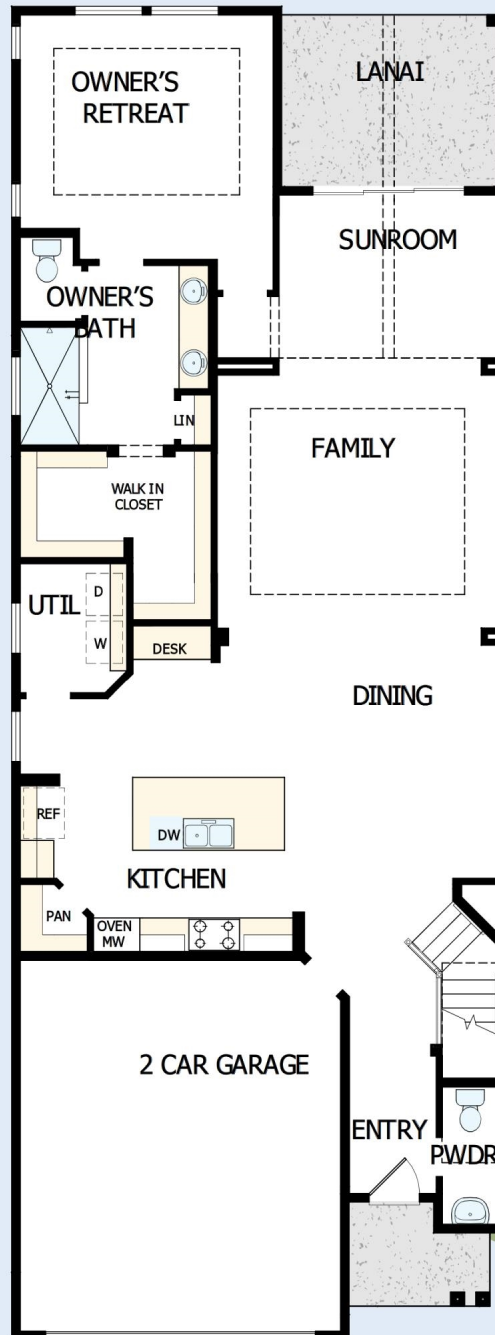
Best Builder Around

We have loved DW homes ever since our mother bought one. The quality of their work, attention to detail and willingness to respond to questions is top notch. The biggest thing we love about DW is their focus on customer service. They are not your typical builder who meets with you to get a check and forgets about you till walk thru. They are your partner through the entire process. Each step of the way they know they are building your dream house and really treat you like family. I would recommend them hands down. My husband sells real estate and has dealt with numerous builders around town. He always directs his clients to DW and signs their praises.

THE HOLLINGER

53 ANCIENT SPRINGS LANE

2,454 sq. ft. • 4 Bedrooms • 2 Full Baths • 1 Half Bath • 2 Car Garage



49310003 JAC

5/27/2025

DavidWeekleyHomes.com

THE HOLLINGER

53 ANCIENT SPRINGS LANE



See a David Weekley Homes Sales Consultant for details.
Prices, plans, dimensions, features, specifications, materials,
and availability of homes or communities are subject to
change without notice or obligation. Illustrations are artist's
depictions only and may differ from completed improvements.
Copyright © 2025 David Weekley Homes - All Rights Reserved.
Jacksonville, FL

DavidWeekleyHomes.com