

THE HARTWELL

2114 SPOTTED FAWN DRIVE



Exterior A

2,159 sq. ft.

2 Bedrooms

2 Full Baths

2 Car Garage

Lauren L.



Home is where the heart is.

Years we waited to buy a house. Painful years of raising children in someone else's home. Years I got to ponder what it would be like to have something of my own. I envisioned my children sitting in their home, playing in their rooms, running through their yard...and the days of waiting were over, all of my research paid off. We bought the house of my dreams and were given the best sales associate and builder, down to my warranty specialist. Everything was easy and seamless. I felt like we were working together, like a team. Now, I have a beautiful house that I know was built with integrity. I could not be more grateful.

Shane



We're living our fairytale thanks to David Weekley

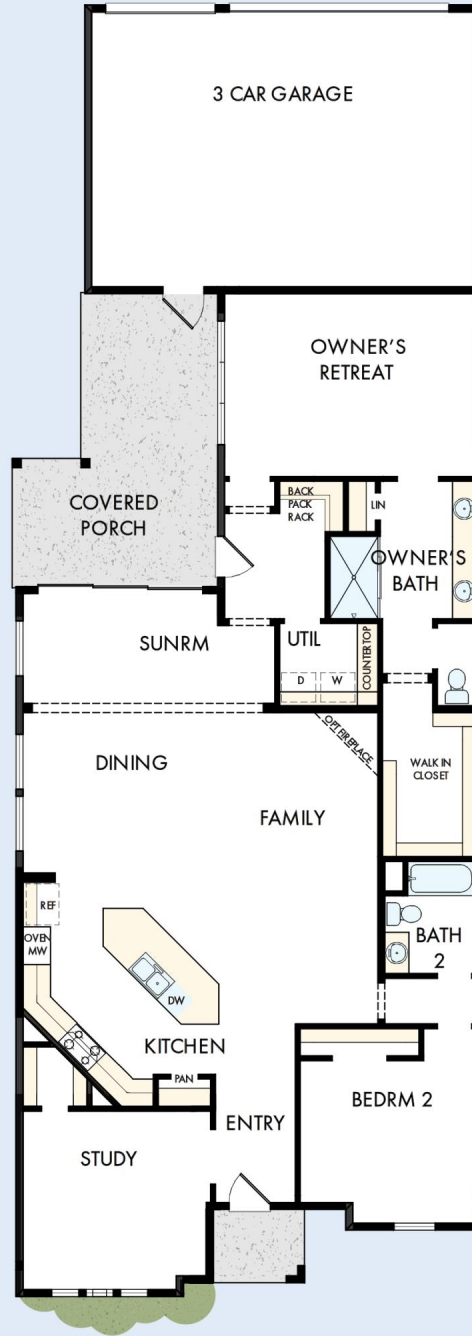
We can't say enough about the level of quality and care we received while building our home. Our builder was with us every step of the way to make sure our every need and desire was being met! The team truly went above and beyond at every turn to give us the home of our dreams! We will definitely recommend David Weekley to anyone looking to build a new home!

Encore
by David Weekley Homes

THE HARTWELL

2114 SPOTTED FAWN DRIVE

2,159 sq. ft. • 2 Bedrooms • 2 Full Baths • 2 Car Garage



19090111 DAL

4/1/2026

See a David Weekley Homes Sales Consultant for details. Prices, plans, dimensions, features, specifications, materials, and availability of homes or communities are subject to change without notice or obligation. Illustrations are artist's depictions only and may differ from completed improvements. Copyright © 2026 David Weekley Homes - All Rights Reserved. Arlington, TX

Encore
by David Weekley Homes

