

# THE SATINWOOD

5409 NAPA VALLEY DRIVE



## Exterior E

2,676 sq. ft.

4 Bedrooms

3 Full Baths

1 Half Bath

2 Car Garage

### Perez Family



### Best Homebuying Experience Ever

We have had several homes built in the past by several homebuilders. Our experience with David Weekley was the best we have ever had. The attention to detail and the customer service were exceptional. Both our sales person and Project Manager kept us well informed and treated us like family. Thanks David Weekley

### Gigi and Papa



### THE BESTest - Better than all the rest!

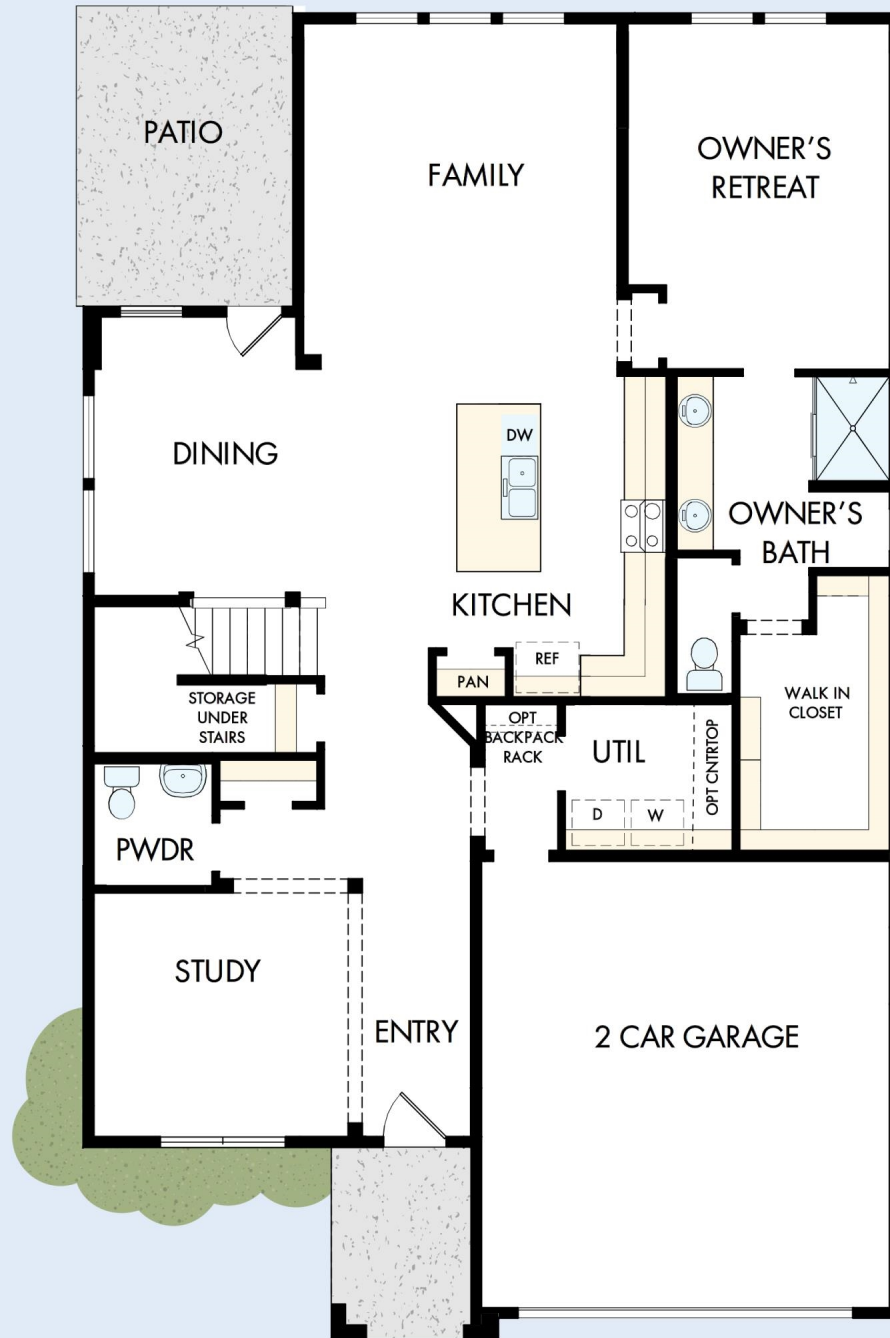
What an awesome and personal family-oriented company! From touring model homes to selecting "THE ONE" just for us, the experience was delightful and amazing! The entire David Weekley team has been exceptionally wonderful and always available to address any issues we encountered. We have been amazed and impressed by the "Service after the Sale" approach by the David Weekley staff. We would recommend David Weekley homes to anyone. We feel like we are an important member of the Weekley family!

David Weekley  
Homes

# THE SATINWOOD

5409 NAPA VALLEY DRIVE

2,676 sq. ft. • 4 Bedrooms • 3 Full Baths • 1 Half Bath • 2 Car Garage



41500097 NAS

4/22/2026

DavidWeekleyHomes.com

# THE SATINWOOD

5409 NAPA VALLEY DRIVE



See a David Weekley Homes Sales Consultant for details.  
Prices, plans, dimensions, features, specifications, materials,  
and availability of homes or communities are subject to  
change without notice or obligation. Illustrations are artist's  
depictions only and may differ from completed improvements.  
Copyright © 2026 David Weekley Homes - All Rights Reserved.  
Smyrna, TN

**DavidWeekleyHomes.com**

