

THE LARIMER

6328 DEERFOOT DRIVE



Exterior B

1,682 sq. ft.

3 Bedrooms

2 Full Baths

1 Half Bath

2 Car Garage

Crystal W.



Welcome Home

My DWHome's experience has been truly 5-stars! From a floorplan concept, reserving a lot filled with dirt, the homebuilding project, to "Welcome Home", the entire process has been amazing. The team provided regular feedback and were always available to address questions and concerns. I was sold on the quality features. The entire team's availability and service has been exceptional before and after closing. Looking forward to enjoying our new home and neighbors for many years to come!

Lauren L.



Home is where the heart is.

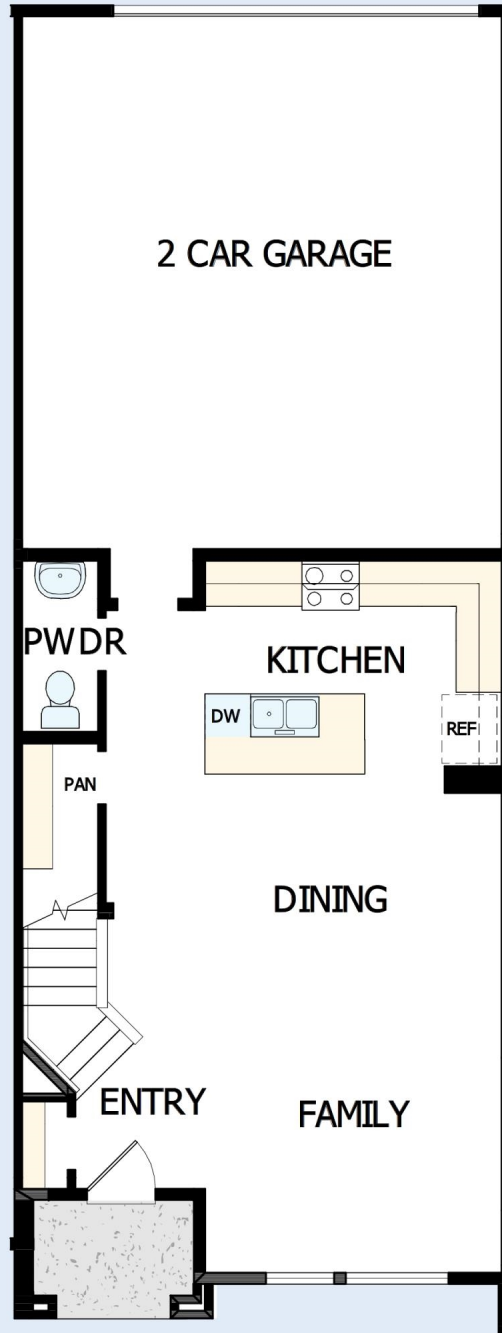
Years we waited to buy a house. Painful years of raising children in someone else's home. Years I got to ponder what it would be like to have something of my own. I envisioned my children sitting in their home, playing in their rooms, running through their yard...and the days of waiting were over, all of my research paid off. We bought the house of my dreams and were given the best sales associate and builder, down to my warranty specialist. Everything was easy and seamless. I felt like we were working together, like a team. Now, I have a beautiful house that I know was built with integrity. I could not be more grateful.

David Weekley
Homes

THE LARIMER

6328 DEERFOOT DRIVE

1,682 sq. ft. • 3 Bedrooms • 2 Full Baths • 1 Half Bath • 2 Car Garage



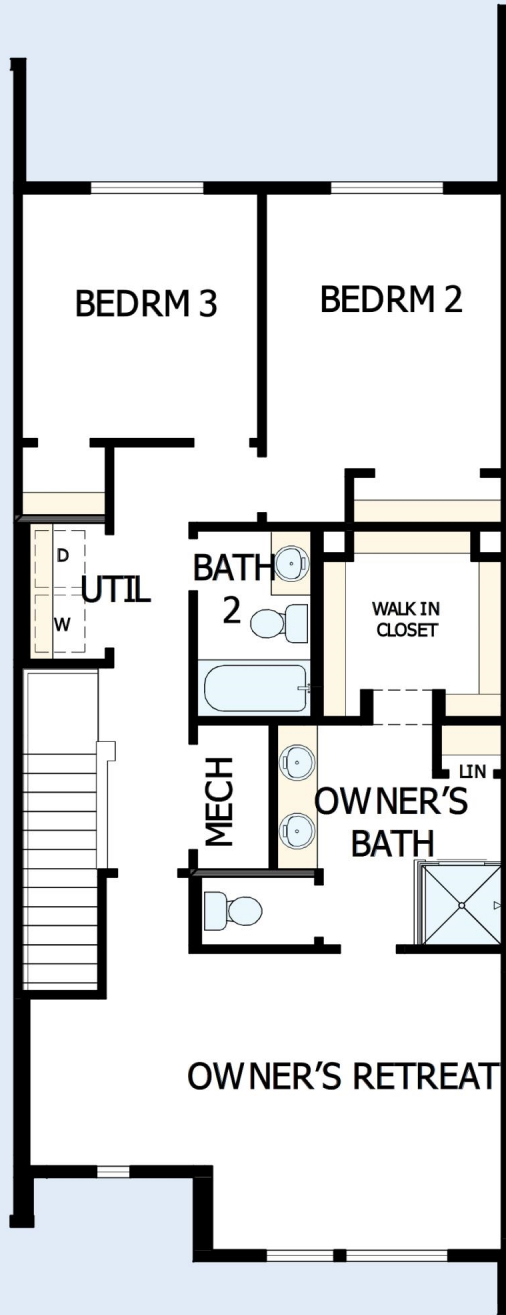
26640047 DEN

2/3/2025

DavidWeekleyHomes.com

THE LARIMER

6328 DEERFOOT DRIVE



See a David Weekley Homes Sales Consultant for details. Prices, plans, dimensions, features, specifications, materials, and availability of homes or communities are subject to change without notice or obligation. Illustrations are artist's depictions only and may differ from completed improvements. Copyright © 2025 David Weekley Homes - All Rights Reserved. Loveland, CO

DavidWeekleyHomes.com

