

# THE TAHOMA

17182 CRIMSON CLOVER DRIVE



Exterior A

4,080 sq. ft.

---

5 Bedrooms

---

3 Full Baths

---

3 Car Garage

## Shane



### **We're living our fairytale thanks to David Weekley**

We can't say enough about the level of quality and care we received while building our home. Our builder was with us every step of the way to make sure our every need and desire was being met! The team truly went above and beyond at every turn to give us the home of our dreams! We will definitely recommend David Weekley to anyone looking to build a new home!

## Gigi and Papa



### **THE BESTest - Better than all the rest!**

What an awesome and personal family-oriented company! From touring model homes to selecting "THE ONE" just for us, the experience was delightful and amazing! The entire David Weekley team has been exceptionally wonderful and always available to address any issues we encountered. We have been amazed and impressed by the "Service after the Sale" approach by the David Weekley staff. We would recommend David Weekley homes to anyone. We feel like we are an important member of the Weekley family!

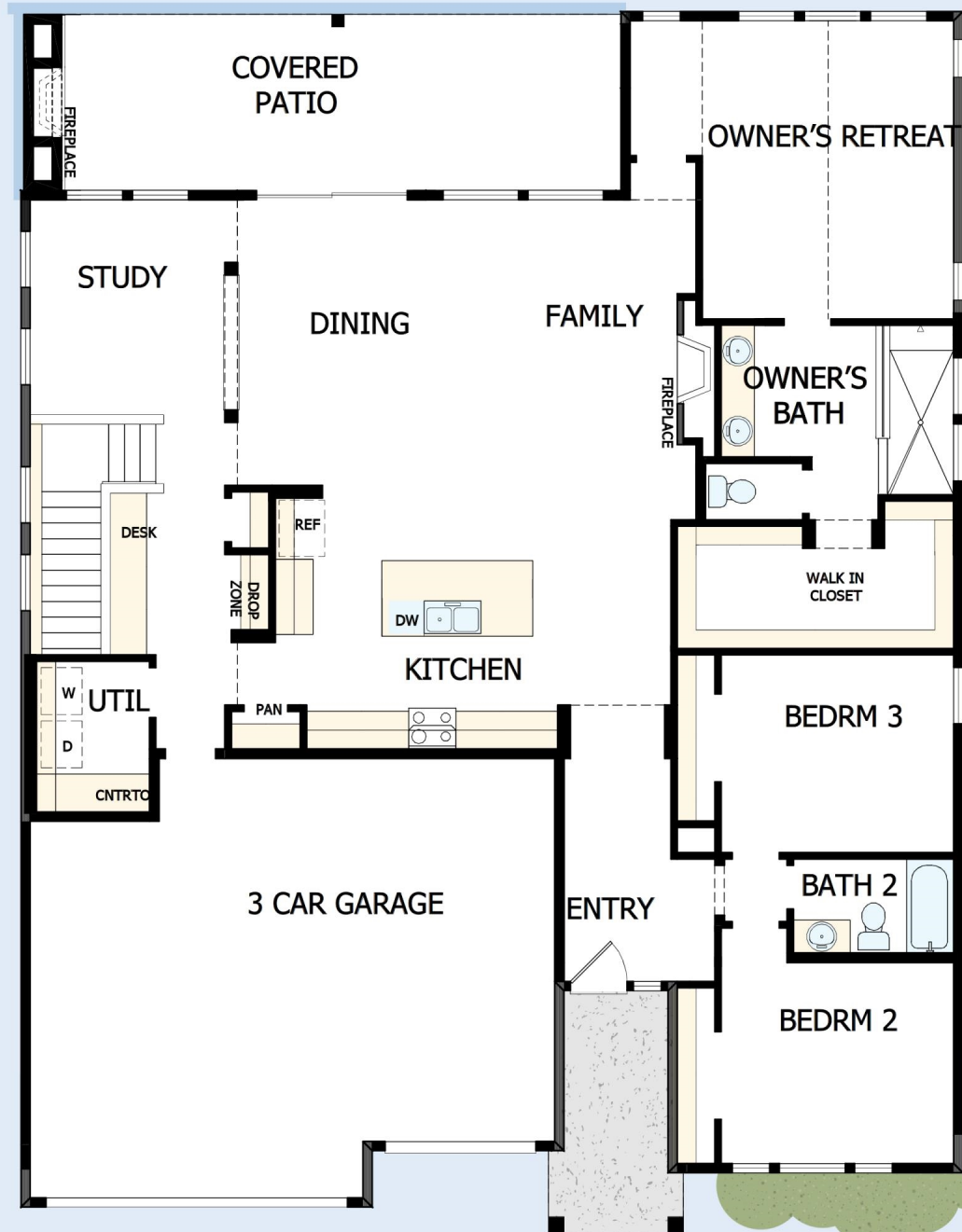
**David Weekley  
Homes**

A graphic element at the bottom of the David Weekley Homes logo, consisting of a horizontal brushstroke in shades of orange and red.

# THE TAHOMA

17182 CRIMSON CLOVER DRIVE

4,080 sq. ft. • 5 Bedrooms • 3 Full Baths • 3 Car Garage



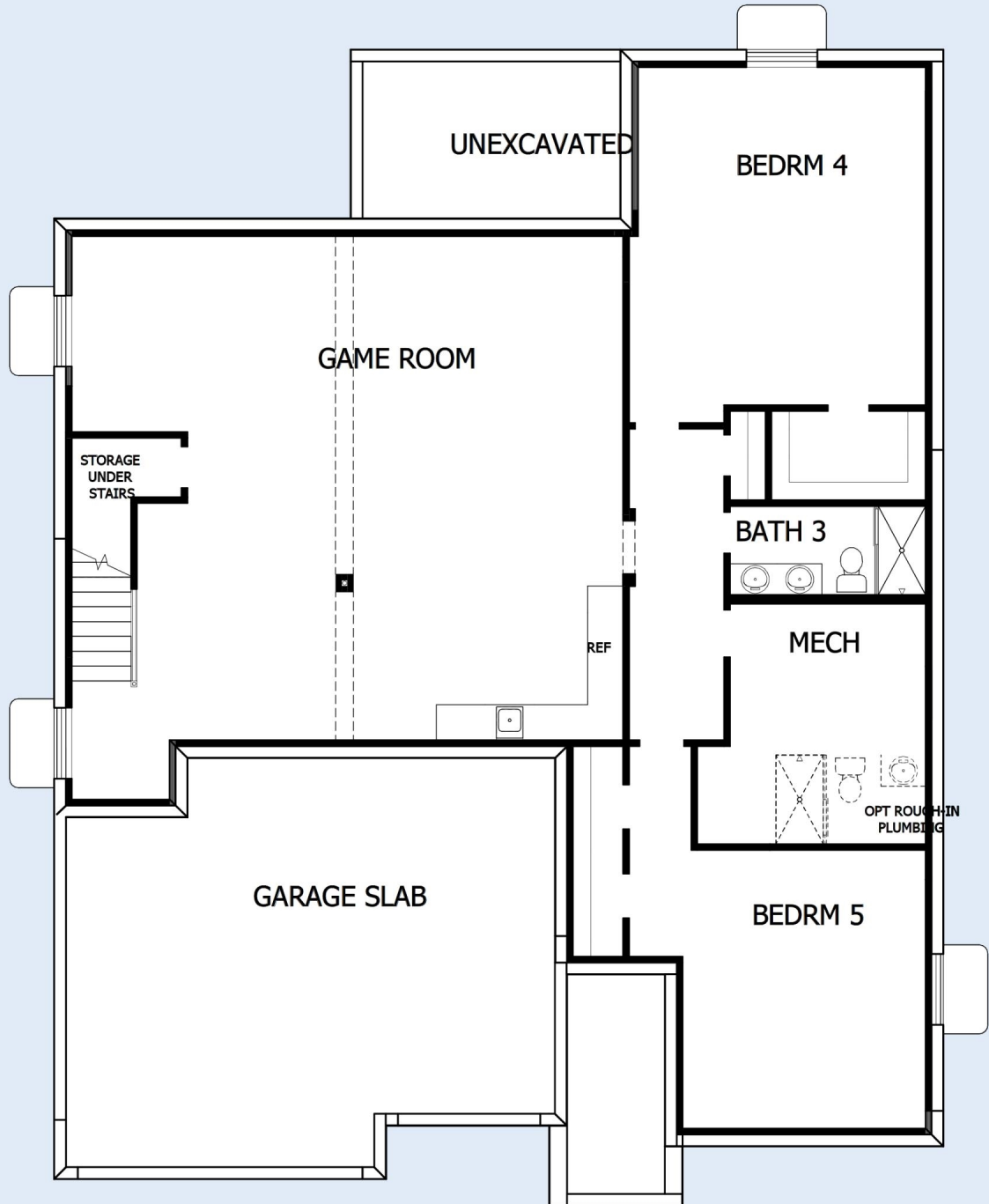
66120083 CSP

1/24/2025

DavidWeekleyHomes.com

# THE TAHOMA

17182 CRIMSON CLOVER DRIVE



See a David Weekley Homes Sales Consultant for details. Prices, plans, dimensions, features, specifications, materials, and availability of homes or communities are subject to change without notice or obligation. Illustrations are artist's depictions only and may differ from completed improvements. Copyright © 2025 David Weekley Homes - All Rights Reserved. Monument, CO

**DavidWeekleyHomes.com**



EQUAL HOUSING OPPORTUNITY