

THE STERLING

810 POSSMAN WAY



Exterior F

2,214 sq. ft.

3 Bedrooms

2 Full Baths

1 Half Bath

2 Car Garage

Gigi and Papa



THE BESTest - Better than all the rest!

What an awesome and personal family-oriented company! From touring model homes to selecting "THE ONE" just for us, the experience was delightful and amazing! The entire David Weekley team has been exceptionally wonderful and always available to address any issues we encountered. We have been amazed and impressed by the "Service after the Sale" approach by the David Weekley staff. We would recommend David Weekley homes to anyone. We feel like we are an important member of the Weekley family!

Greg and Jane



Exceptional service and experience!

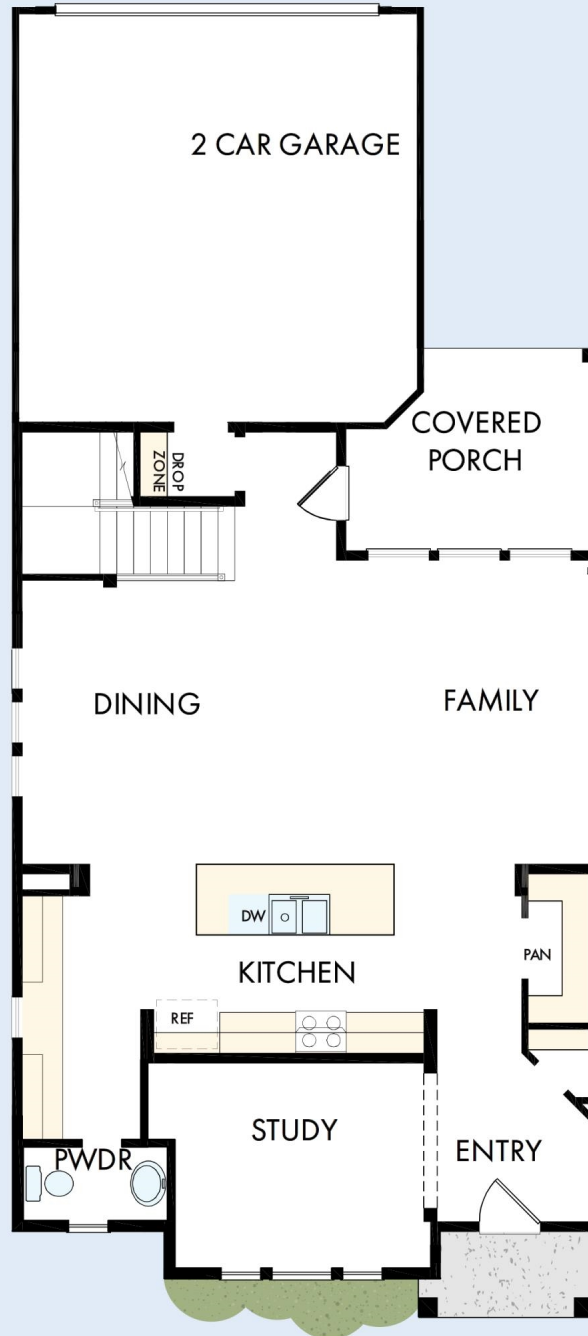
We have been fortunate enough to build several new homes and this was by far the best experience that we've encountered. We actually debated whether or not we wanted to go through the home building process again or simply purchase a pre-owned home or a finished new home. So pleased we built! Our Weekley team (sales associate, design consultant and builder) was very professional, courteous, attentive, responsive and pro-active from beginning to end. They've all become our adopted kids! Great overall experience!

David Weekley
Homes

THE STERLING

810 POSSMAN WAY

2,214 sq. ft. • 3 Bedrooms • 2 Full Baths • 1 Half Bath • 2 Car Garage



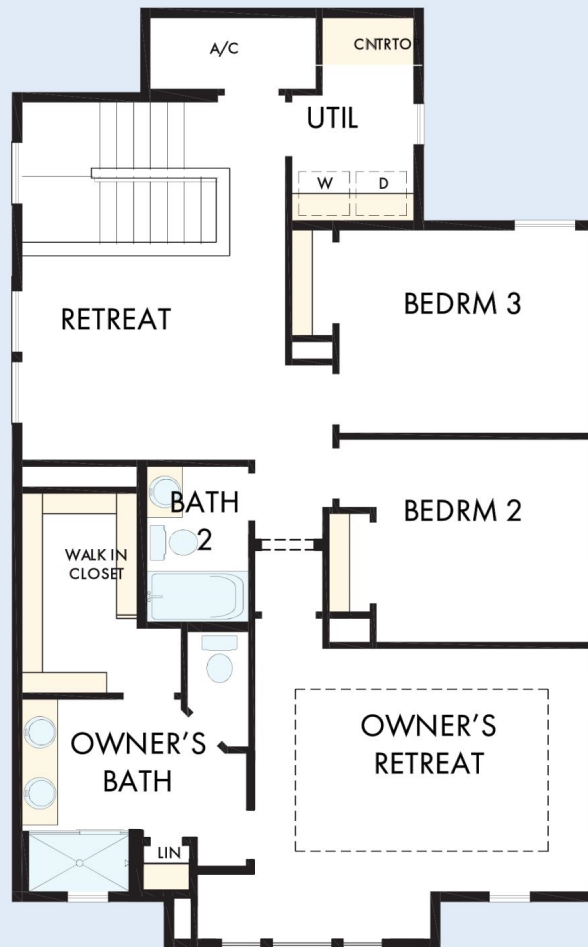
42400025 IND

3/23/2026

DavidWeekleyHomes.com

THE STERLING

810 POSSMAN WAY



See a David Weekley Homes Sales Consultant for details. Prices, plans, dimensions, features, specifications, materials, and availability of homes or communities are subject to change without notice or obligation. Illustrations are artist's depictions only and may differ from completed improvements. Copyright © 2026 David Weekley Homes - All Rights Reserved. Westfield, IN

DavidWeekleyHomes.com

