

THE JEWEL

2804 NEIDMAN DRIVE



Exterior C

3,110 sq. ft.

4 Bedrooms

3 Full Baths

3 Car Garage

Crystal W.



Welcome Home

My DWHomes experience has been truly 5-stars! From a floorplan concept, reserving a lot filled with dirt, the homebuilding project, to "Welcome Home", the entire process has been amazing. The team provided regular feedback and were always available to address questions and concerns. I was sold on the quality features. The entire team's availability and service has been exceptional before and after closing. Looking forward to enjoying our new home and neighbors for many years to come!

Chelsea



Incredible Experience, Incredible Home!

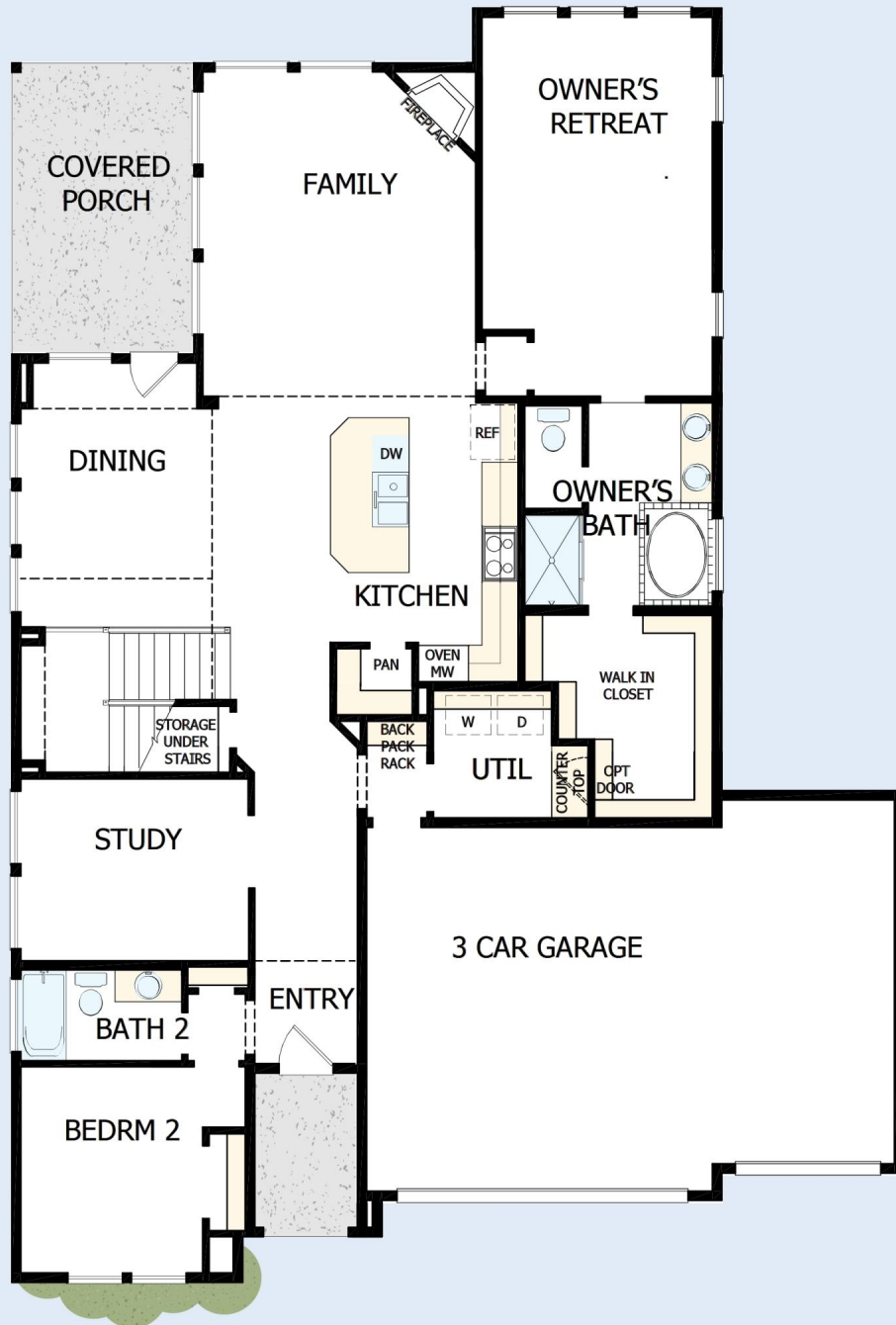
We trusted the team from Day 1 and couldn't have asked for a better experience. The attention to detail was fantastic, and we felt as if the DWH team had a personal interest in the success of our home. The process was well defined and every team member set very clear expectations. We love every inch of our home, and we'd definitely recommend DWH!

David Weekley
Homes

THE JEWEL

2804 NEIDMAN DRIVE

3,110 sq. ft. • 4 Bedrooms • 3 Full Baths • 3 Car Garage



18650129 DAL

12/18/2024

DavidWeekleyHomes.com

THE JEWEL

2804 NEIDMAN DRIVE



See a David Weekley Homes Sales Consultant for details. Prices, plans, dimensions, features, specifications, materials, and availability of homes or communities are subject to change without notice or obligation. Illustrations are artist's depictions only and may differ from completed improvements. Copyright © 2024 David Weekley Homes - All Rights Reserved. Mansfield, TX

DavidWeekleyHomes.com

