

# THE CHASEWOOD

2084 SPOTTED FAWN DRIVE



Exterior B

2,238 sq. ft.

2 Bedrooms

2 Full Baths

2 Car Garage

**Lauren L.**



**Home is where the heart is.**

Years we waited to buy a house. Painful years of raising children in someone else's home. Years I got to ponder what it would be like to have something of my own. I envisioned my children sitting in their home, playing in their rooms, running through their yard...and the days of waiting were over, all of my research paid off. We bought the house of my dreams and were given the best sales associate and builder, down to my warranty specialist. Everything was easy and seamless. I felt like we were working together, like a team. Now, I have a beautiful house that I know was built with integrity. I could not be more grateful.

**Gigi and Papa**



**THE BESTest - Better than all the rest!**

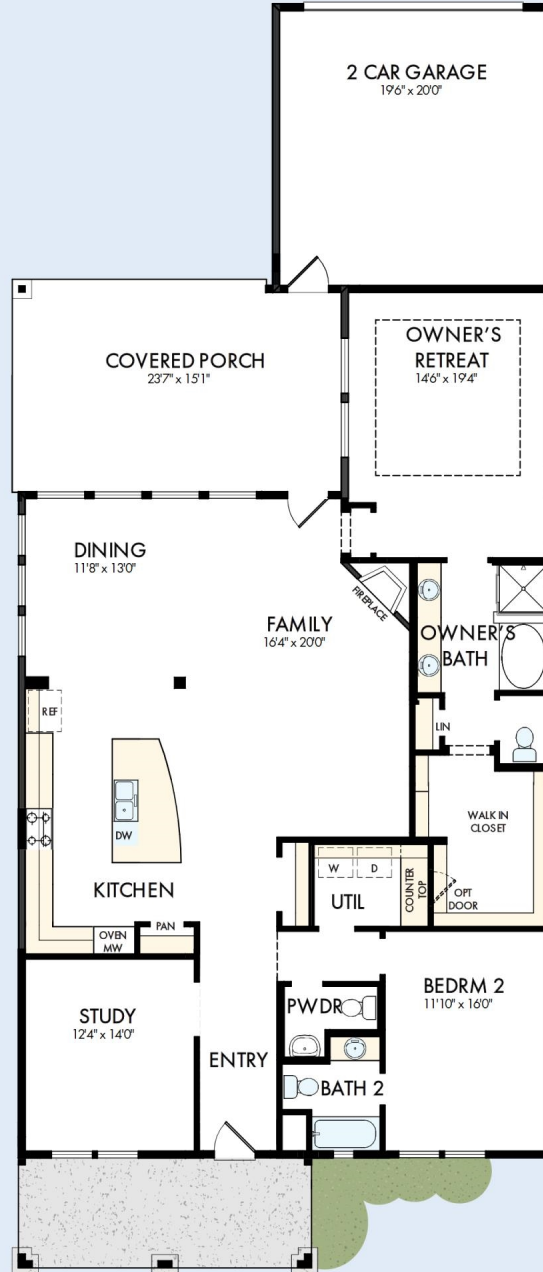
What an awesome and personal family-oriented company! From touring model homes to selecting "THE ONE" just for us, the experience was delightful and amazing! The entire David Weekley team has been exceptionally wonderful and always available to address any issues we encountered. We have been amazed and impressed by the "Service after the Sale" approach by the David Weekley staff. We would recommend David Weekley homes to anyone. We feel like we are an important member of the Weekley family!

**Encore**  
by David Weekley Homes

# THE CHASEWOOD

2084 SPOTTED FAWN DRIVE

2,238 sq. ft. • 2 Bedrooms • 2 Full Baths • 2 Car Garage



19100077 DAL

5/11/2026

See a David Weekley Homes Sales Consultant for details. Prices, plans, dimensions, features, specifications, materials, and availability of homes or communities are subject to change without notice or obligation. Illustrations are artist's depictions only and may differ from completed improvements. Copyright © 2026 David Weekley Homes - All Rights Reserved. Arlington, TX

**Encore**  
by David Weekley Homes

