

# THE SHELMER

1124 WILD CREST LANE



Exterior A

1,356 sq. ft.

2 Bedrooms

2 Full Baths

1 Half Bath

1 Car Garage

**Lauren L.**



### **Home is where the heart is.**

Years we waited to buy a house. Painful years of raising children in someone else's home. Years I got to ponder what it would be like to have something of my own. I envisioned my children sitting in their home, playing in their rooms, running through their yard...and the days of waiting were over, all of my research paid off. We bought the house of my dreams and were given the best sales associate and builder, down to my warranty specialist. Everything was easy and seamless. I felt like we were working together, like a team. Now, I have a beautiful house that I know was built with integrity. I could not be more grateful.

**Perez Family**



### **Best Homebuying Experience Ever**

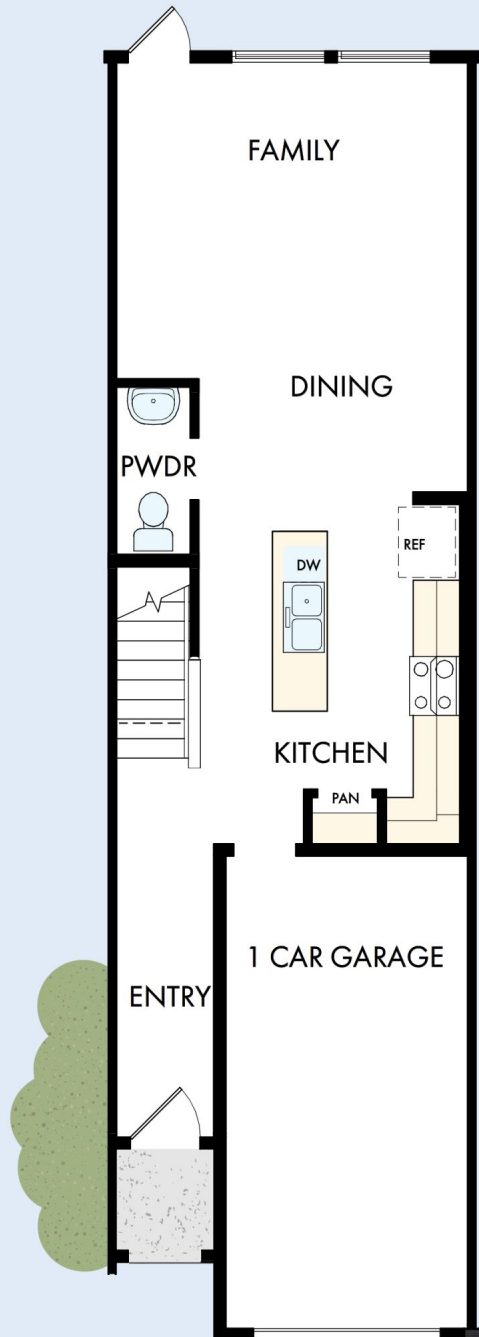
We have had several homes built in the past by several homebuilders. Our experience with David Weekley was the best we have ever had. The attention to detail and the customer service were exceptional. Both our sales person and Project Manager kept us well informed and treated us like family. Thanks David Weekley

**David Weekley  
Homes**

# THE SHELMER

1124 WILD CREST LANE

1,356 sq. ft. • 2 Bedrooms • 2 Full Baths • 1 Half Bath • 1 Car Garage

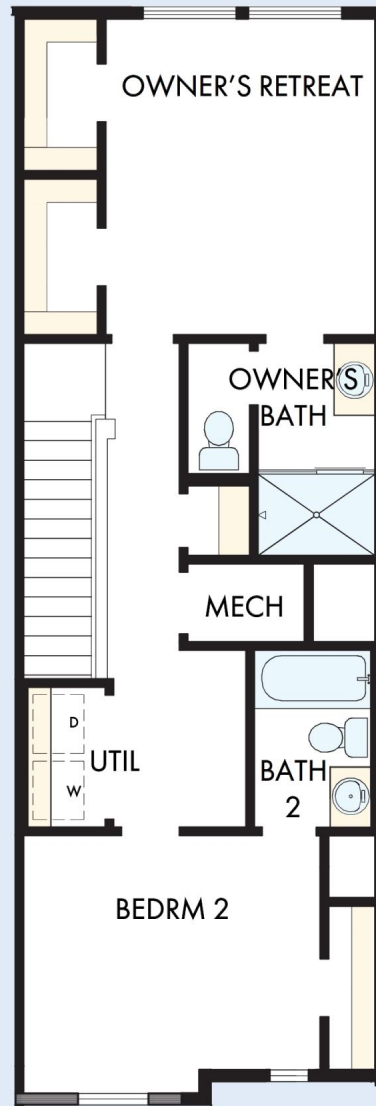


30260214 ORL

1/15/2026

# THE SHELMER

1124 WILD CREST LANE



See a David Weekley Homes Sales Consultant for details.  
Prices, plans, dimensions, features, specifications, materials,  
and availability of homes or communities are subject to  
change without notice or obligation. Illustrations are artist's  
depictions only and may differ from completed improvements.  
Copyright © 2026 David Weekley Homes - All Rights Reserved.  
Daytona Beach, FL

**DavidWeekleyHomes.com**