

# THE SANCTUARY

2054 RIPPLE PARK BEND



## Exterior A

2,200 sq. ft.

3 Bedrooms

3 Full Baths

2 Car Garage

### Jordan



#### Greatly exceeded every expectation! A+++!

The entire experience was excellent from the first day I showed up to look at houses. The whole team came together to provide a truly quality house that I will be living in for years to come. Kajal helped me purchase the house and coordinated all meetings. She was very cheerful and professional at all times and I could tell that she cared about her clients and my family. Jeff and Robbie were builders that always went the extra mile to ensure total customer satisfaction. Jeff was very helpful and I am grateful to his management and know that I will be moving in to a house that is built right with a great attention to detail... Ashley also provided Kajal with assistance whenever Kajal was not available. I could not be happier with everyone involved in building this house. David Weekley is a great company and I would enthusiastically recommend them to others needing a quality house built in the future. Thank you for such a great experience and I hope that this company continues to grow.

### Chelsea



#### Incredible Experience, Incredible Home!

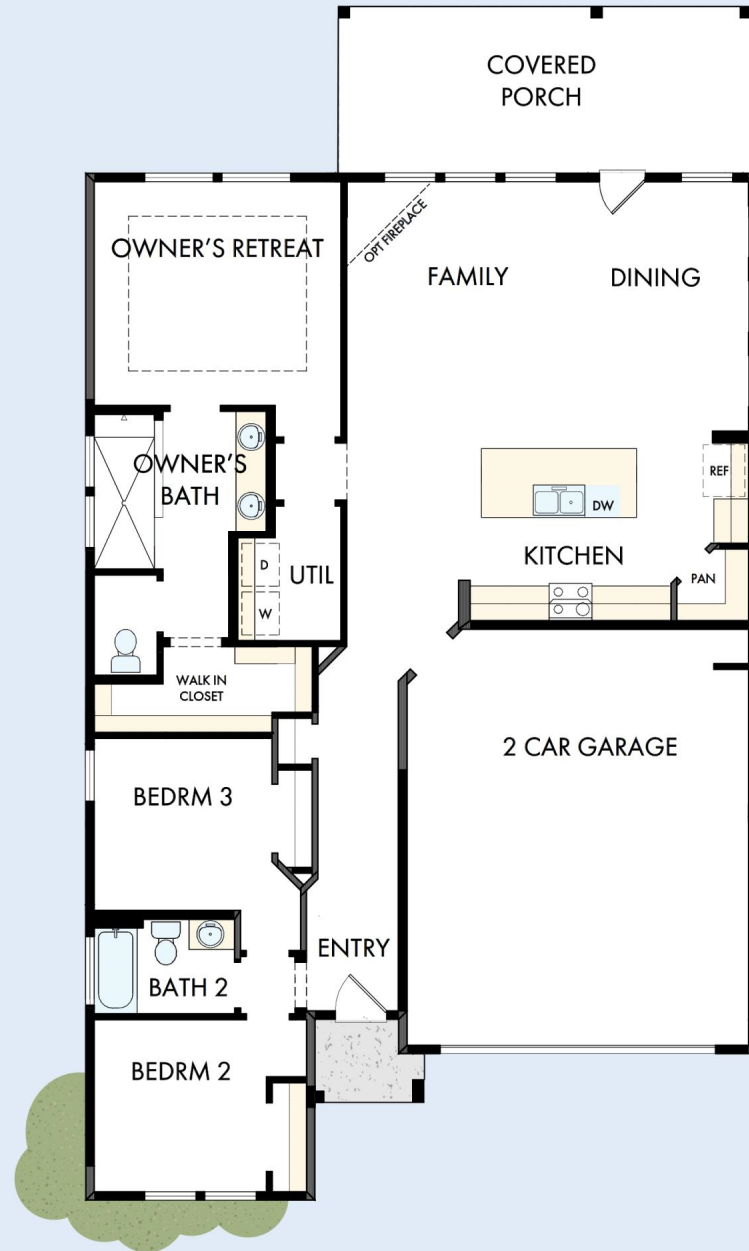
We trusted the team from Day 1 and couldn't have asked for a better experience. The attention to detail was fantastic, and we felt as if the DWH team had a personal interest in the success of our home. The process was well defined and every team member set very clear expectations. We love every inch of our home, and we'd definitely recommend DWH!

**Encore**  
by David Weekley Homes

# THE SANCTUARY

2054 RIPPLE PARK BEND

2,200 sq. ft. • 3 Bedrooms • 3 Full Baths • 2 Car Garage

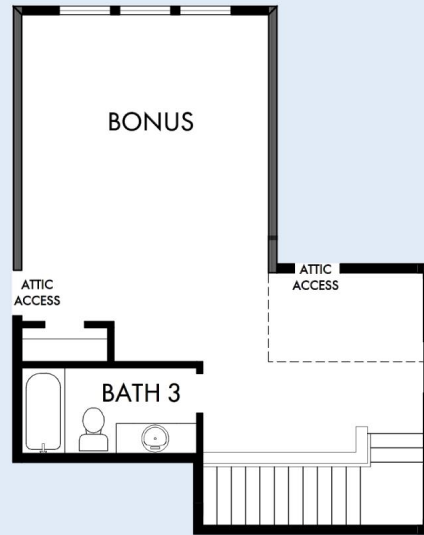


46830040 ATL

5/31/2026

# THE SANCTUARY

2054 RIPPLE PARK BEND



See a David Weekley Homes Sales Consultant for details. Prices, plans, dimensions, features, specifications, materials, and availability of homes or communities are subject to change without notice or obligation. Illustrations are artist's depictions only and may differ from completed improvements. Copyright © 2026 David Weekley Homes - All Rights Reserved. Canton, GA



Encore  
by David Weekley Homes