

THE AXEL

6213 ESCARPMENT DRIVE



Exterior E

2,898 sq. ft.

4 Bedrooms

3 Full Baths

1 Half Bath

2 Car Garage

Gigi and Papa



THE BESTest - Better than all the rest!

What an awesome and personal family-oriented company! From touring model homes to selecting "THE ONE" just for us, the experience was delightful and amazing! The entire David Weekley team has been exceptionally wonderful and always available to address any issues we encountered. We have been amazed and impressed by the "Service after the Sale" approach by the David Weekley staff. We would recommend David Weekley homes to anyone. We feel like we are an important member of the Weekley family!

Perez Family



Best Homebuying Experience Ever

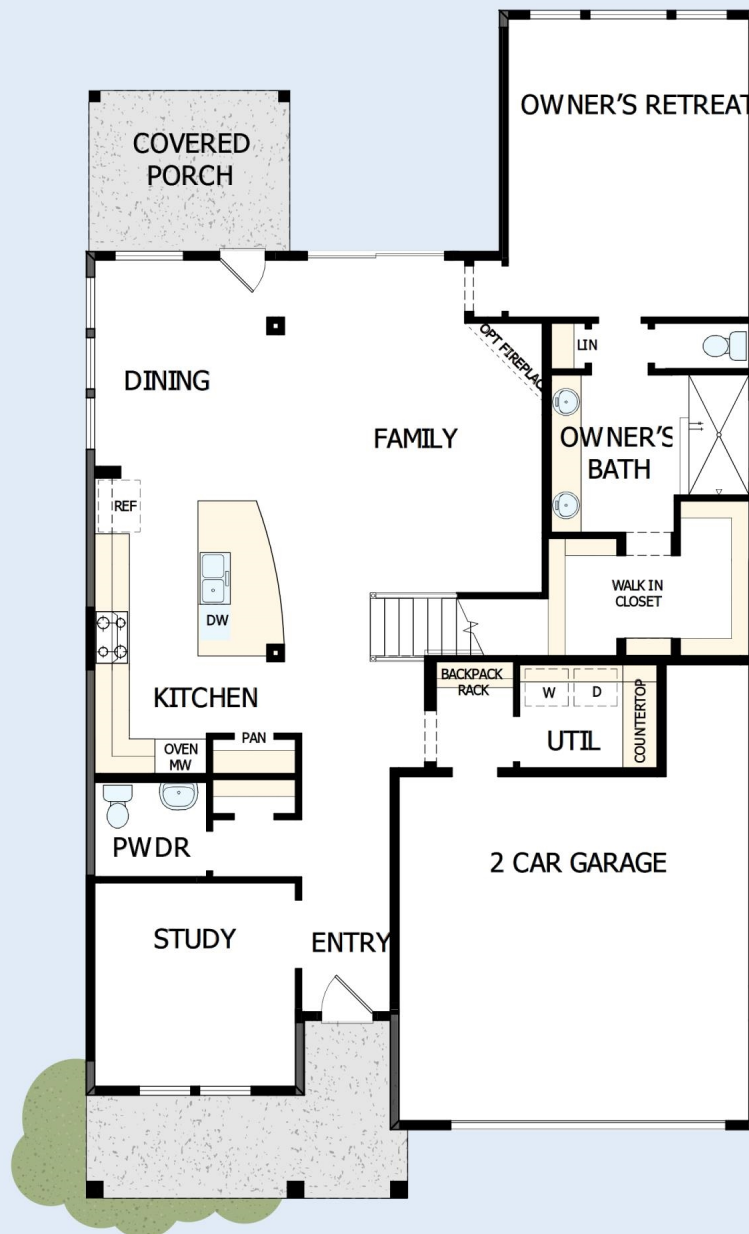
We have had several homes built in the past by several homebuilders. Our experience with David Weekley was the best we have ever had. The attention to detail and the customer service were exceptional. Both our sales person and Project Manager kept us well informed and treated us like family. Thanks David Weekley

David Weekley
Homes

THE AXEL

6213 ESCARPMENT DRIVE

2,898 sq. ft. • 4 Bedrooms • 3 Full Baths • 1 Half Bath • 2 Car Garage



19440041 DAL

2/20/2025

DavidWeekleyHomes.com

THE AXEL

6213 ESCARPMENT DRIVE



See a David Weekley Homes Sales Consultant for details. Prices, plans, dimensions, features, specifications, materials and availability of homes or communities are subject to change without notice or obligation. Illustrations are artist's depictions only and may differ from completed improvements. Copyright © 2025 David Weekley Homes - All Rights Reserved. Ft. Worth, TX

DavidWeekleyHomes.com