

THE FELTON

980 N HAY LN #44 (600 W)



Exterior C

1,808 sq. ft.

3 Bedrooms

2 Full Baths

1 Half Bath

2 Car Garage

Crystal W.



Welcome Home

My DWHome experience has been truly 5-stars! From a floorplan concept, reserving a lot filled with dirt, the homebuilding project, to "Welcome Home", the entire process has been amazing. The team provided regular feedback and were always available to address questions and concerns. I was sold on the quality features. The entire team's availability and service has been exceptional before and after closing. Looking forward to enjoying our new home and neighbors for many years to come!

Sandra A.



Best Builder Around

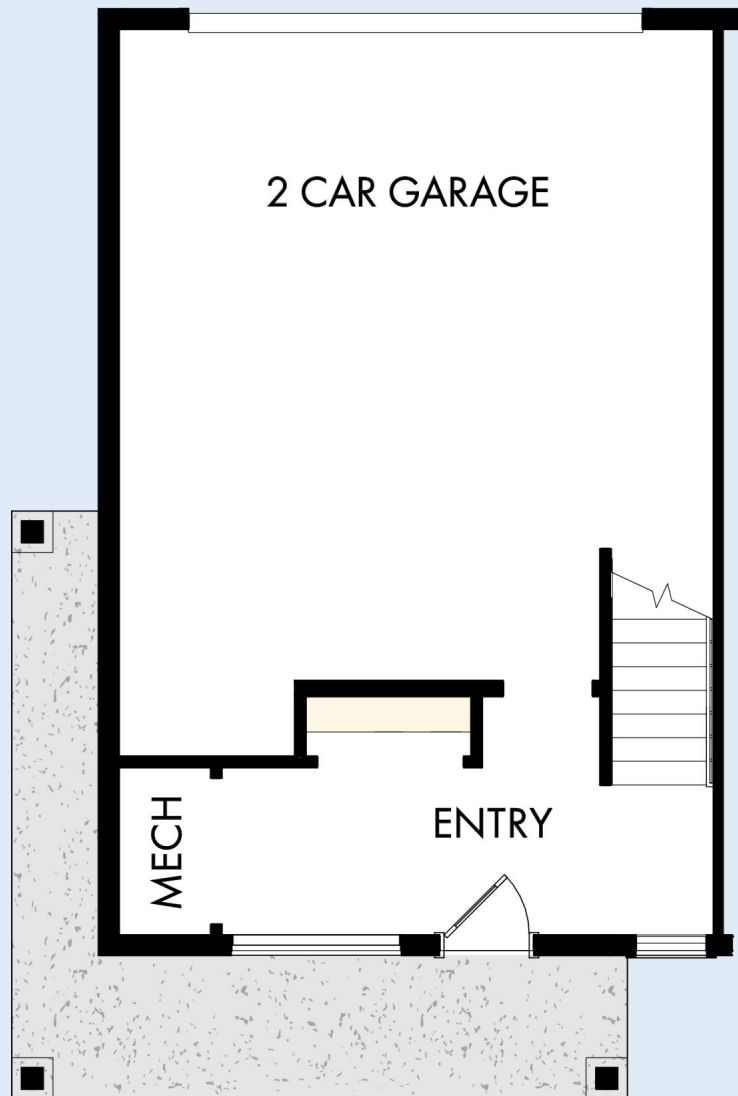
We have loved DW homes ever since our mother bought one. The quality of their work, attention to detail and willingness to respond to questions is top notch. The biggest thing we love about DW is their focus on customer service. They are not your typical builder who meets with you to get a check and forgets about you till walk thru. They are your partner through the entire process. Each step of the way they know they are building your dream house and really treat you like family. I would recommend them hands down. My husband sells real estate and has dealt with numerous builders around town. He always directs his clients to DW and signs their praises.

David Weekley
Homes

THE FELTON

980 N HAY LN #44 (600 W)

1,808 sq. ft. • 3 Bedrooms • 2 Full Baths • 1 Half Bath • 2 Car Garage



53450044 SLC

5/22/2026

DavidWeekleyHomes.com

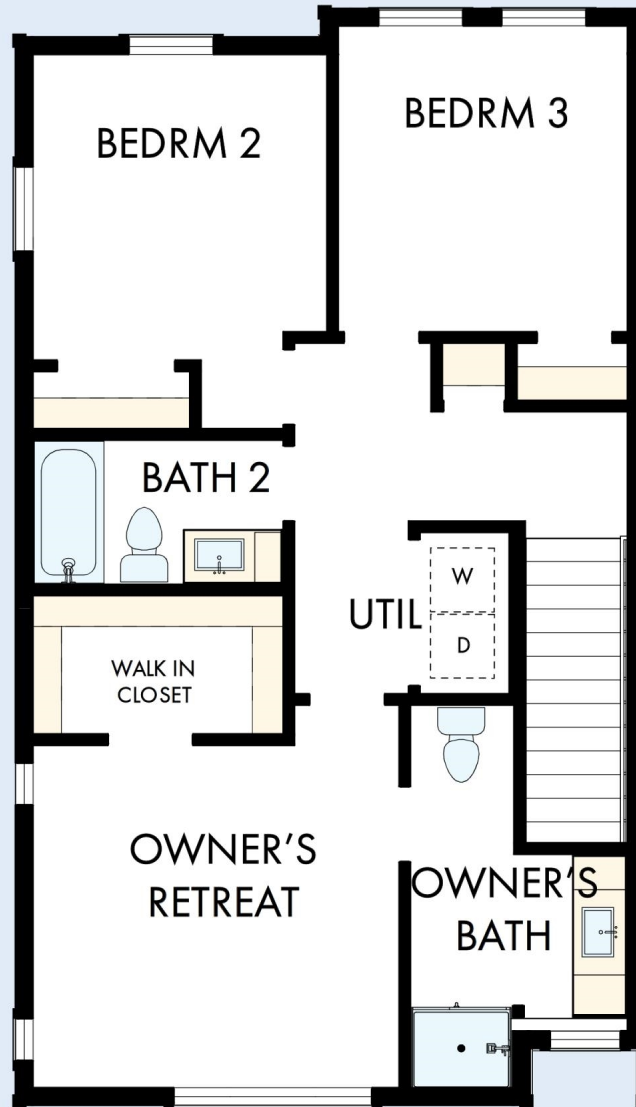
THE FELTON

980 N HAY LN #44 (600 W)



THE FELTON

980 N HAY LN #44 (600 W)



See a David Weekley Homes Sales Consultant for details. Prices, plans, dimensions, features, specifications, materials, and availability of homes or communities are subject to change without notice or obligation. Illustrations are artist's depictions only and may differ from completed improvements. Copyright © 2026 David Weekley Homes - All Rights Reserved. Farmington, UT

DavidWeekleyHomes.com

