

# THE MONTAGE

2066 RIPPLE PARK BEND



Exterior A

2,337 sq. ft.

3 Bedrooms

2 Full Baths

2 Car Garage

## Greg and Jane



### Exceptional service and experience!

We have been fortunate enough to build several new homes and this was by far the best experience that we've encountered. We actually debated whether or not we wanted to go through the home building process again or simply purchase a pre-owned home or a finished new home. So pleased we built! Our Weekley team (sales associate, design consultant and builder) was very professional, courteous, attentive, responsive and pro-active from beginning to end. They've all become our adopted kids! Great overall experience!

## Shane



### We're living our fairytale thanks to David Weekley

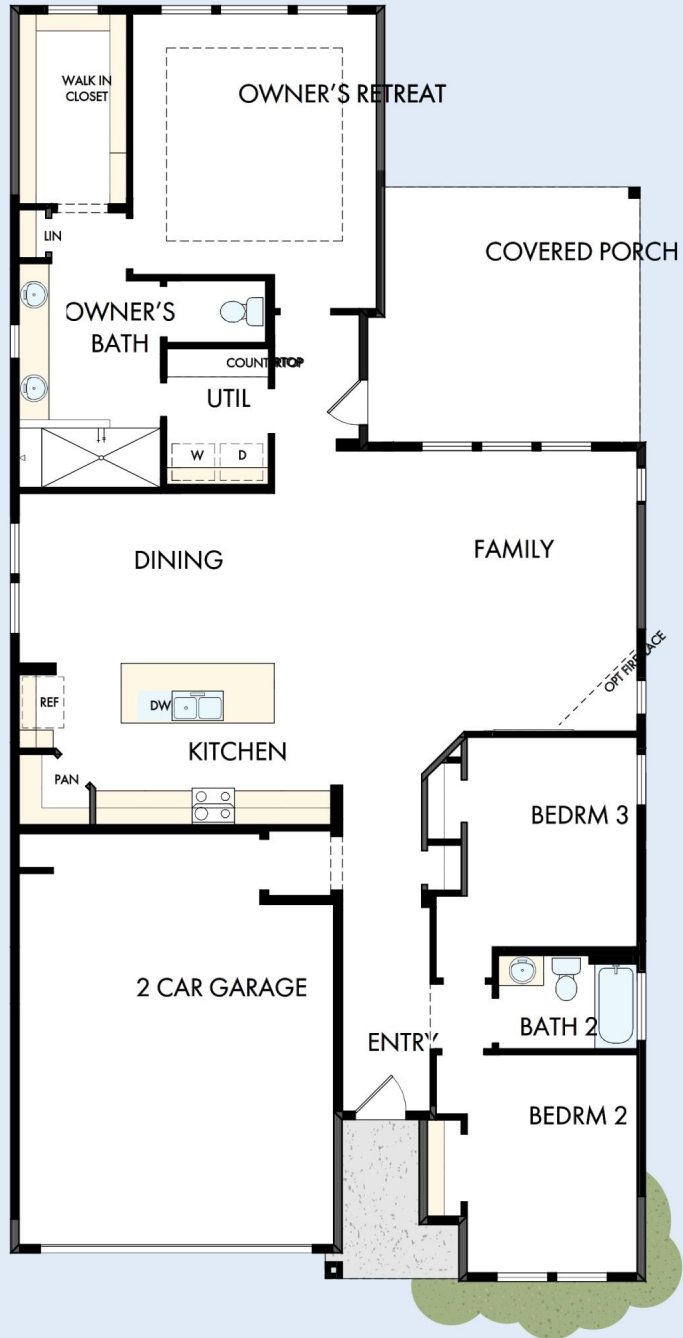
We can't say enough about the level of quality and care we received while building our home. Our builder was with us every step of the way to make sure our every need and desire was being met! The team truly went above and beyond at every turn to give us the home of our dreams! We will definitely recommend David Weekley to anyone looking to build a new home!

Encore  
by David Weekley Homes

# THE MONTAGE

2066 RIPPLE PARK BEND

2,337 sq. ft. • 3 Bedrooms • 2 Full Baths • 2 Car Garage

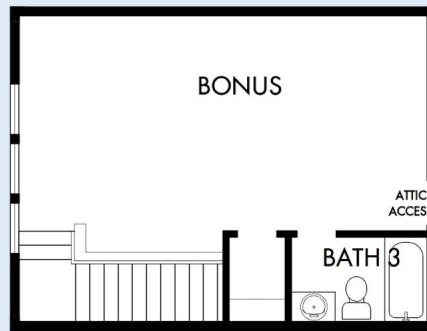


46830042 ATL

6/10/2026

# THE MONTAGE

2066 RIPPLE PARK BEND



See a David Weekley Homes Sales Consultant for details. Prices, plans, dimensions, features, specifications, materials, and availability of homes or communities are subject to change without notice or obligation. Illustrations are artist's depictions only and may differ from completed improvements. Copyright © 2026 David Weekley Homes - All Rights Reserved. Canton, GA



Encore  
by David Weekley Homes