

# THE ALLMAN

15231 EASTLYN DRIVE



## Exterior F

2,539 sq. ft.

3 Bedrooms

2 Full Baths

3 Car Garage

**Meg S.**



### **Truly treated us like family!!!**

We enjoyed every part of the home building process. It was amazing! Our builder was always keeping us informed and really went above and beyond to ensure that we love our home. Our warranty rep is outstanding and continues to take care of our every need. I couldn't have asked for a better experience. Our builder and warranty rep continue to be there for us as a family. While our interactions with the DW Family have been highly professional, we are also lucky enough to be able to call them some of our greatest friends! Wouldn't change a thing!

**Gigi and Papa**



### **THE BESTest - Better than all the rest!**

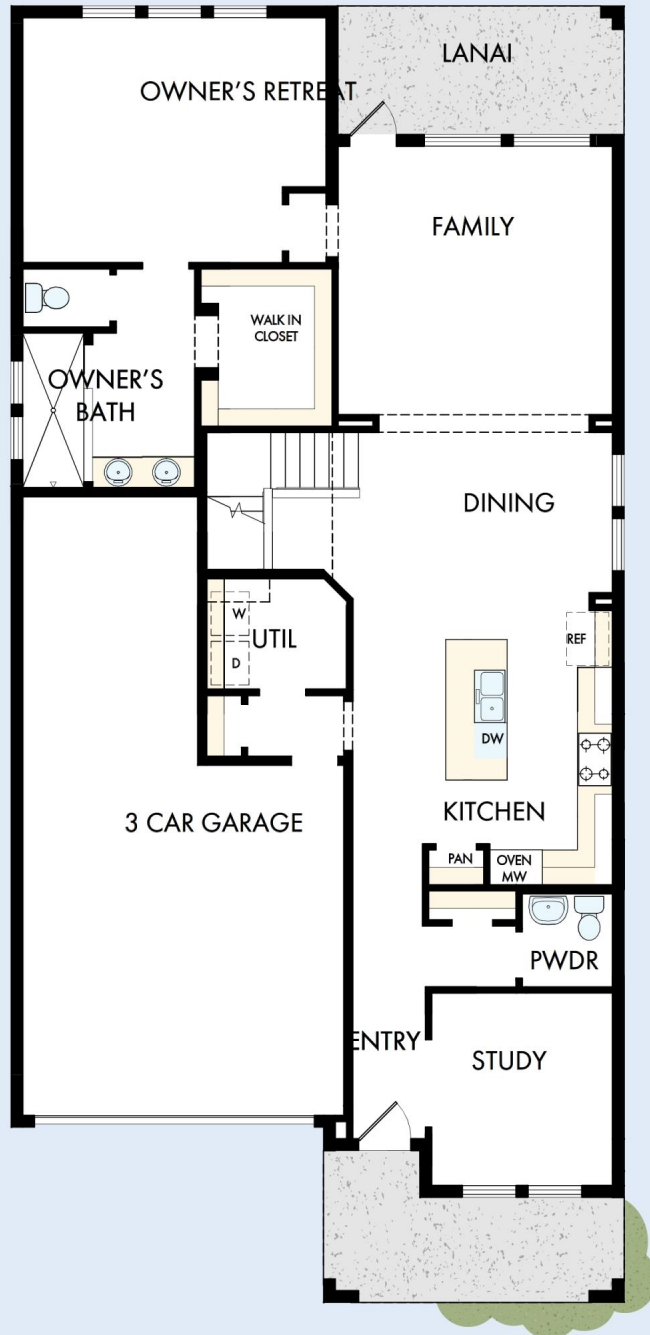
What an awesome and personal family-oriented company! From touring model homes to selecting "THE ONE" just for us, the experience was delightful and amazing! The entire David Weekley team has been exceptionally wonderful and always available to address any issues we encountered. We have been amazed and impressed by the "Service after the Sale" approach by the David Weekley staff. We would recommend David Weekley homes to anyone. We feel like we are an important member of the Weekley family!

**David Weekley  
Homes**

# THE ALLMAN

15231 EASTLYN DRIVE

2,539 sq. ft. • 3 Bedrooms • 2 Full Baths • 3 Car Garage



39640058 TAM

4/6/2026

DavidWeekleyHomes.com

# THE ALLMAN

15231 EASTLYN DRIVE



See a David Weekley Homes Sales Consultant for details.  
Prices, plans, dimensions, features, specifications, materials,  
and availability of homes or communities are subject to  
change without notice or obligation. Illustrations are artist's  
depictions only and may differ from completed improvements.  
Copyright © 2026 David Weekley Homes - All Rights Reserved.  
Bradenton, FL

**DavidWeekleyHomes.com**

