

THE BUSHWICK II

218 QUARTZ HILL WAY



Exterior A

2,113 sq. ft.

3 Bedrooms

2 Full Baths

1 Half Bath

2 Car Garage

Meg S.



Truly treated us like family!!!

We enjoyed every part of the home building process. It was amazing! Our builder was always keeping us informed and really went above and beyond to ensure that we love our home. Our warranty rep is outstanding and continues to take care of our every need. I couldn't have asked for a better experience. Our builder and warranty rep continue to be there for us as a family. While our interactions with the DW Family have been highly professional, we are also lucky enough to be able to call them some of our greatest friends! Wouldn't change a thing!

Lauren L.



Home is where the heart is.

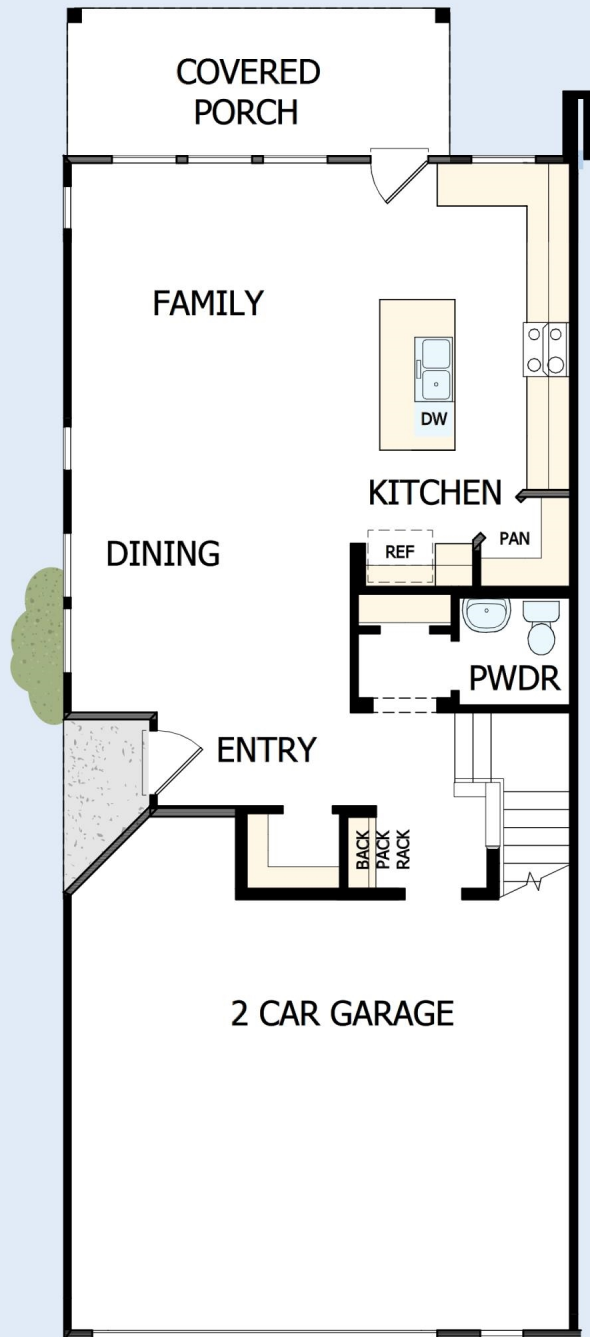
Years we waited to buy a house. Painful years of raising children in someone else's home. Years I got to ponder what it would be like to have something of my own. I envisioned my children sitting in their home, playing in their rooms, running through their yard...and the days of waiting were over, all of my research paid off. We bought the house of my dreams and were given the best sales associate and builder, down to my warranty specialist. Everything was easy and seamless. I felt like we were working together, like a team. Now, I have a beautiful house that I know was built with integrity. I could not be more grateful.

**David Weekley
Homes**

THE BUSHWICK II

218 QUARTZ HILL WAY

2,113 sq. ft. • 3 Bedrooms • 2 Full Baths • 1 Half Bath • 2 Car Garage



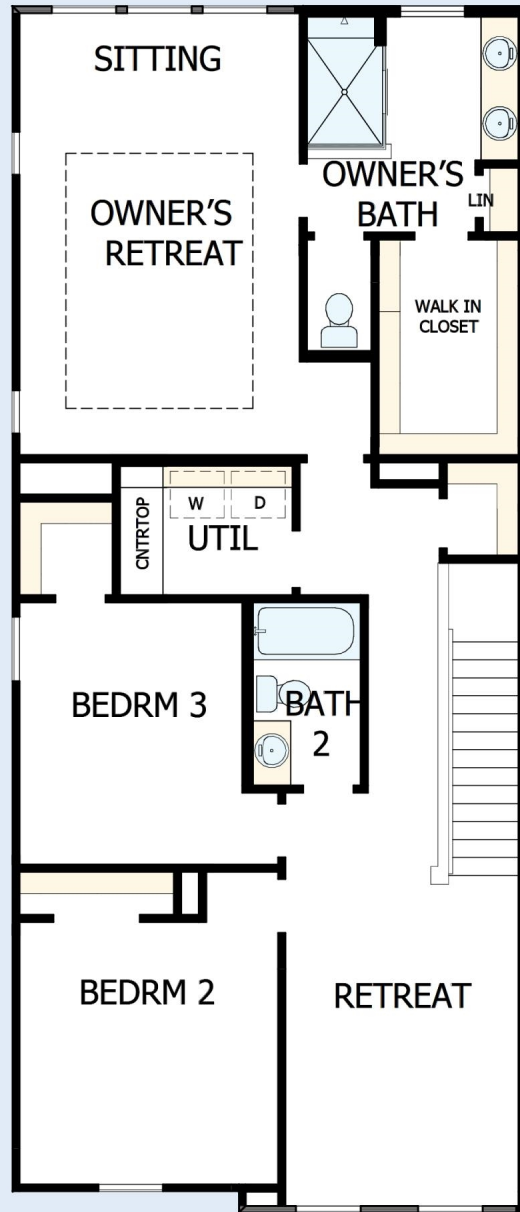
36290009 CHA

11/13/2025

DavidWeekleyHomes.com

THE BUSHWICK II

218 QUARTZ HILL WAY



See a David Weekley Homes Sales Consultant for details. Prices, plans, dimensions, features, specifications, materials, and availability of homes or communities are subject to change without notice or obligation. Illustrations are artist's depictions only and may differ from completed improvements. Copyright © 2025 David Weekley Homes - All Rights Reserved. Waxhaw, NC

DavidWeekleyHomes.com