

# THE MONET

1104 WILDLIGHT AVE



Exterior B

1,919 sq. ft.

3 Bedrooms

2 Full Baths

1 Half Bath

2 Car Garage

**Meg S.**



**Truly treated us like family!!!**

We enjoyed every part of the home building process. It was amazing! Our builder was always keeping us informed and really went above and beyond to ensure that we love our home. Our warranty rep is outstanding and continues to take care of our every need. I couldn't have asked for a better experience. Our builder and warranty rep continue to be there for us as a family. While our interactions with the DW Family have been highly professional, we are also lucky enough to be able to call them some of our greatest friends! Wouldn't change a thing!

**Rich C.**



**Wonderful Experience!**

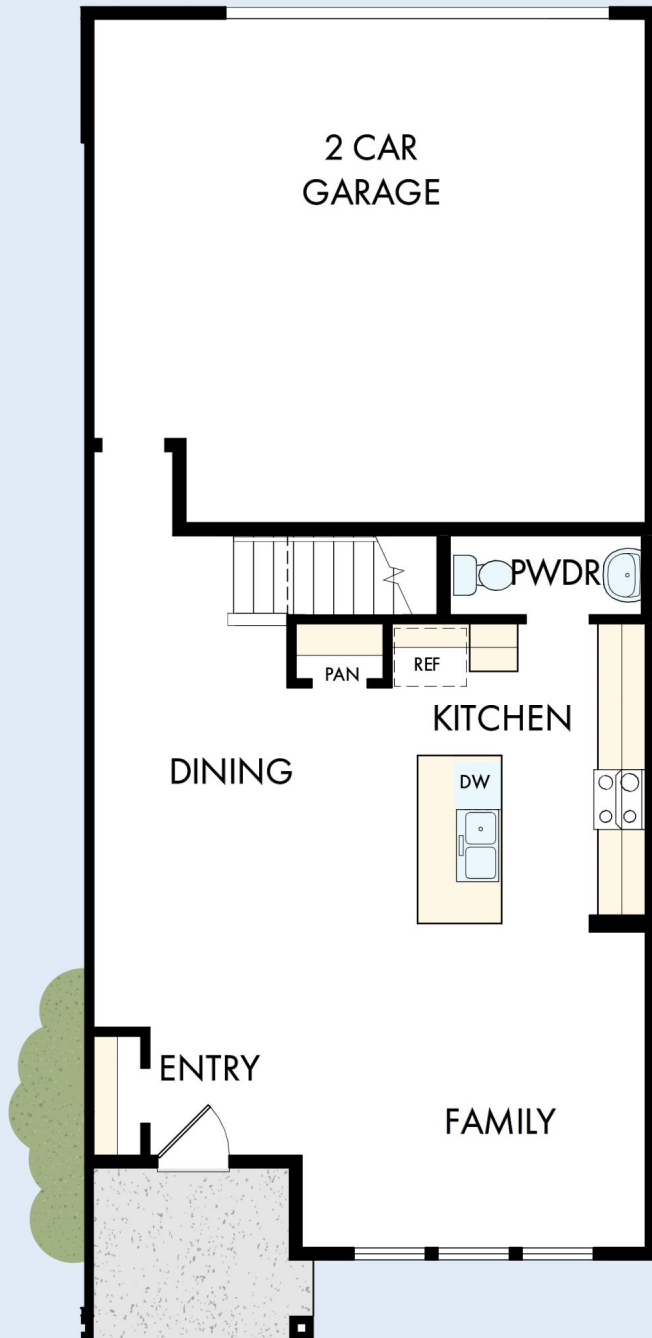
If there is anything that sets David Weekley apart from other builders it is their customer service. I felt like a member of the family from the first time I walked into the model, to when I received my keys and saw the wonderful housewarming presents that were left for me, up to the present when I see my salesman in the neighborhood. I felt like they really took the time to understand what I was looking for and then came through with my dream home. I would highly recommend David Weekley to anyone looking to buy and/or build a home.

**David Weekley  
Homes**

# THE MONET

1104 WILDLIGHT AVE

1,919 sq. ft. • 3 Bedrooms • 2 Full Baths • 1 Half Bath • 2 Car Garage



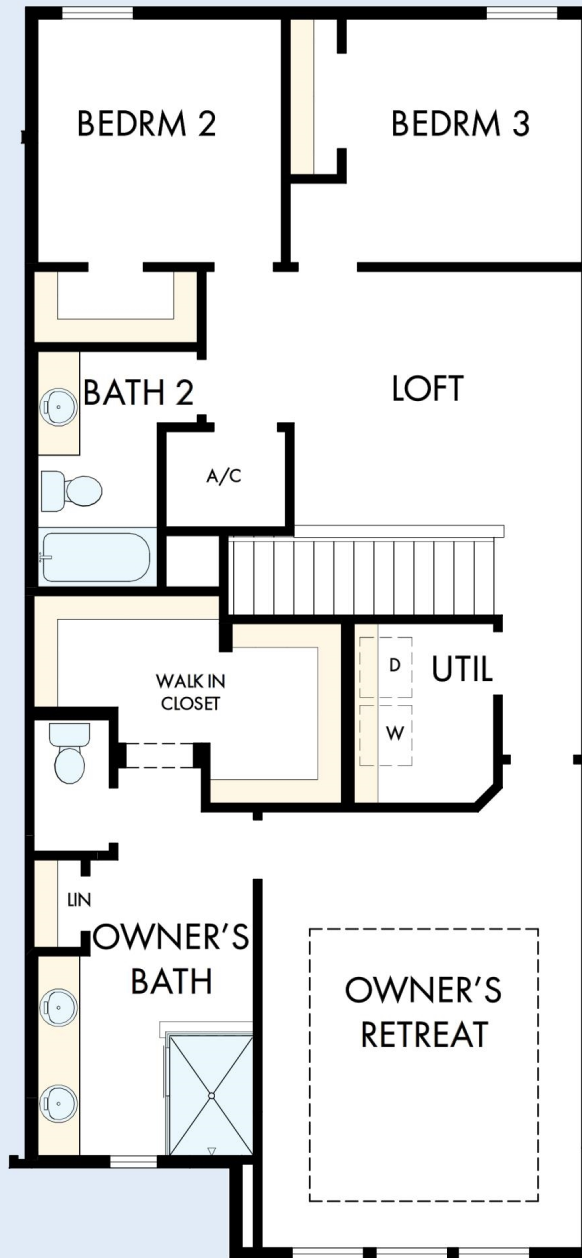
49290055 JAC

1/16/2026

DavidWeekleyHomes.com

# THE MONET

1104 WILDLIGHT AVE



See a David Weekley Homes Sales Consultant for details.  
Prices, plans, dimensions, features, specifications, materials,  
and availability of homes or communities are subject to  
change without notice or obligation. Illustrations are artist's  
depictions only and may differ from completed improvements.  
Copyright © 2026 David Weekley Homes - All Rights Reserved.  
Yulee, FL

DavidWeekleyHomes.com