

THE TOWNSMAN

19909 TOMLINSON RD



Exterior A

3,605 sq. ft.

5 Bedrooms

3 Full Baths

3 Car Garage

Gigi and Papa



THE BESTest - Better than all the rest!

What an awesome and personal family-oriented company! From touring model homes to selecting "THE ONE" just for us, the experience was delightful and amazing! The entire David Weekley team has been exceptionally wonderful and always available to address any issues we encountered. We have been amazed and impressed by the "Service after the Sale" approach by the David Weekley staff. We would recommend David Weekley homes to anyone. We feel like we are an important member of the Weekley family!

Lauren L.



Home is where the heart is.

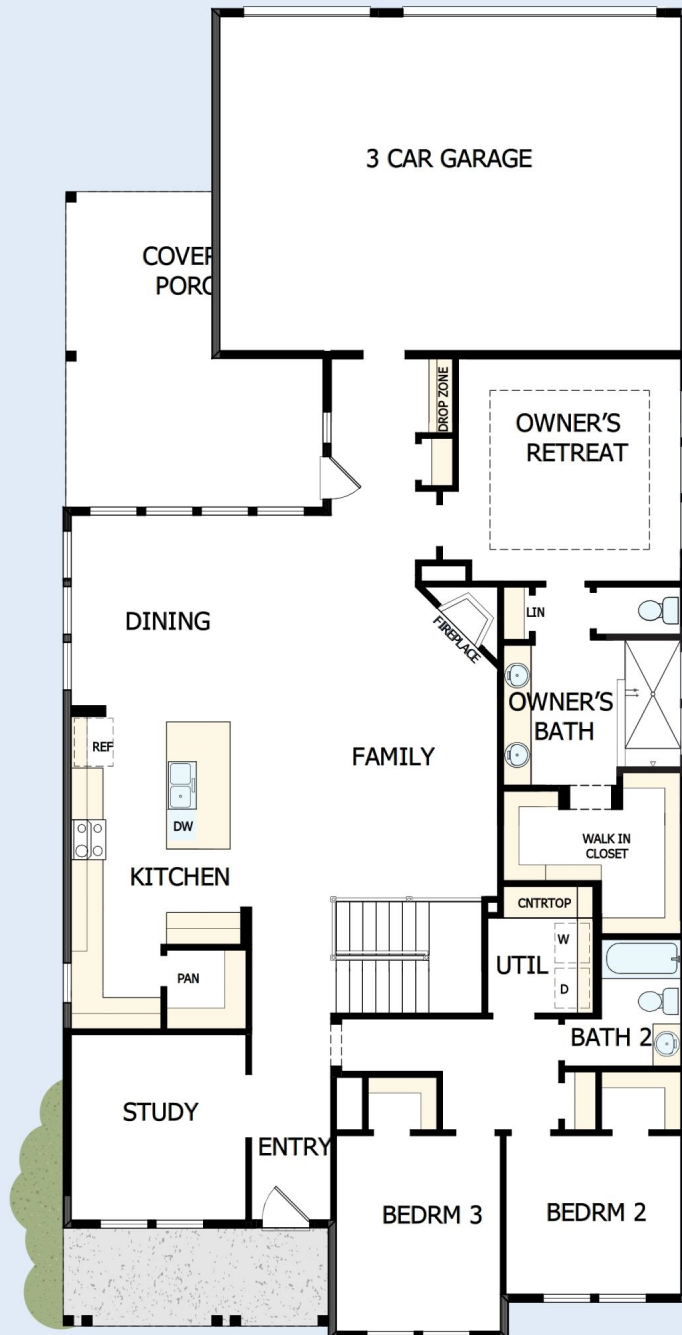
Years we waited to buy a house. Painful years of raising children in someone else's home. Years I got to ponder what it would be like to have something of my own. I envisioned my children sitting in their home, playing in their rooms, running through their yard...and the days of waiting were over, all of my research paid off. We bought the house of my dreams and were given the best sales associate and builder, down to my warranty specialist. Everything was easy and seamless. I felt like we were working together, like a team. Now, I have a beautiful house that I know was built with integrity. I could not be more grateful.

David Weekley
Homes

THE TOWNSMAN

19909 TOMLINSON RD

3,605 sq. ft. • 5 Bedrooms • 3 Full Baths • 3 Car Garage



42340062 IND

9/12/2025

DavidWeekleyHomes.com

THE TOWNSMAN

19909 TOMLINSON RD



See a David Weekley Homes Sales Consultant for details. Prices, plans, dimensions, features, specifications, materials, and availability of homes or communities are subject to change without notice or obligation. Illustrations are artist's depictions only and may differ from completed improvements. Copyright © 2025 David Weekley Homes - All Rights Reserved. Westfield, IN

DavidWeekleyHomes.com