

THE OSBORNE

11228 SHREVEPORT DRIVE



Exterior A

2,827 sq. ft.

4 Bedrooms

3 Full Baths

2 Car Garage

Rich C.



Wonderful Experience!

If there is anything that sets David Weekley apart from other builders it is their customer service. I felt like a member of the family from the first time I walked into the model, to when I received my keys and saw the wonderful housewarming presents that were left for me, up to the present when I see my salesman in the neighborhood. I felt like they really took the time to understand what I was looking for and then came through with my dream home. I would highly recommend David Weekley to anyone looking to buy and/or build a home.

Greg and Jane



Exceptional service and experience!

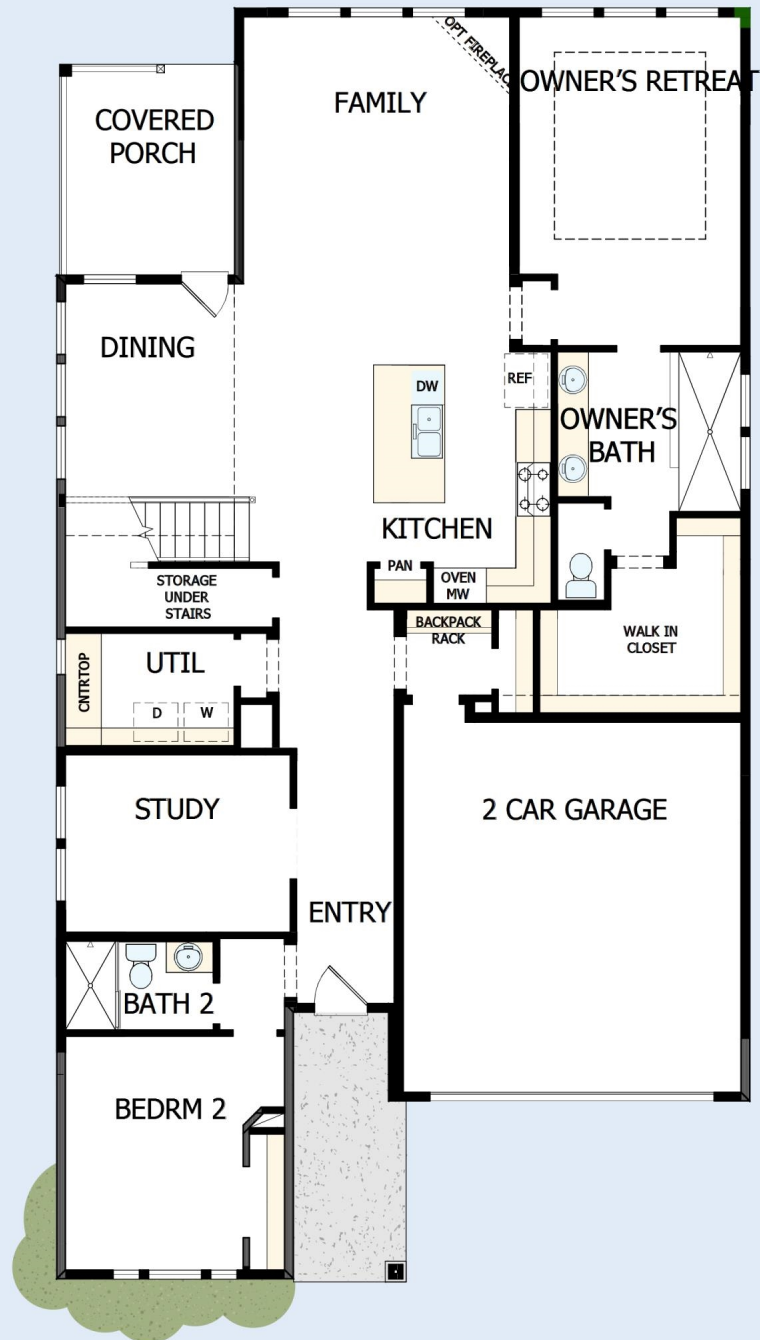
We have been fortunate enough to build several new homes and this was by far the best experience that we've encountered. We actually debated whether or not we wanted to go through the home building process again or simply purchase a pre-owned home or a finished new home. So pleased we built! Our Weekley team (sales associate, design consultant and builder) was very professional, courteous, attentive, responsive and pro-active from beginning to end. They've all become our adopted kids! Great overall experience!

**David Weekley
Homes**

THE OSBORNE

11228 SHREVEPORT DRIVE

2,827 sq. ft. • 4 Bedrooms • 3 Full Baths • 2 Car Garage



36280107 CHA

8/21/2025

DavidWeekleyHomes.com

THE OSBORNE

11228 SHREVEPORT DRIVE



See a David Weekley Homes Sales Consultant for details. Prices, plans, dimensions, features, specifications, materials, and availability of homes or communities are subject to change without notice or obligation. Illustrations are artist's depictions only and may differ from completed improvements. Copyright © 2025 David Weekley Homes - All Rights Reserved. Huntersville, NC.

DavidWeekleyHomes.com