

# THE GREENFARM

11225 SHREVEPORT DRIVE

**3,684 sq. ft.**

---

**5 Bedrooms**

---

**4 Full Baths**

---

**1 Half Bath**

---

**3 Car Garage**

**David Weekley  
Homes**

**Rich C.**



### **Wonderful Experience!**

If there is anything that sets David Weekley apart from other builders it is their customer service. I felt like a member of the family from the first time I walked into the model, to when I received my keys and saw the wonderful housewarming presents that were left for me, up to the present when I see my salesman in the neighborhood. I felt like they really took the time to understand what I was looking for and then came through with my dream home. I would highly recommend David Weekley to anyone looking to buy and/or build a home.

**Shane**



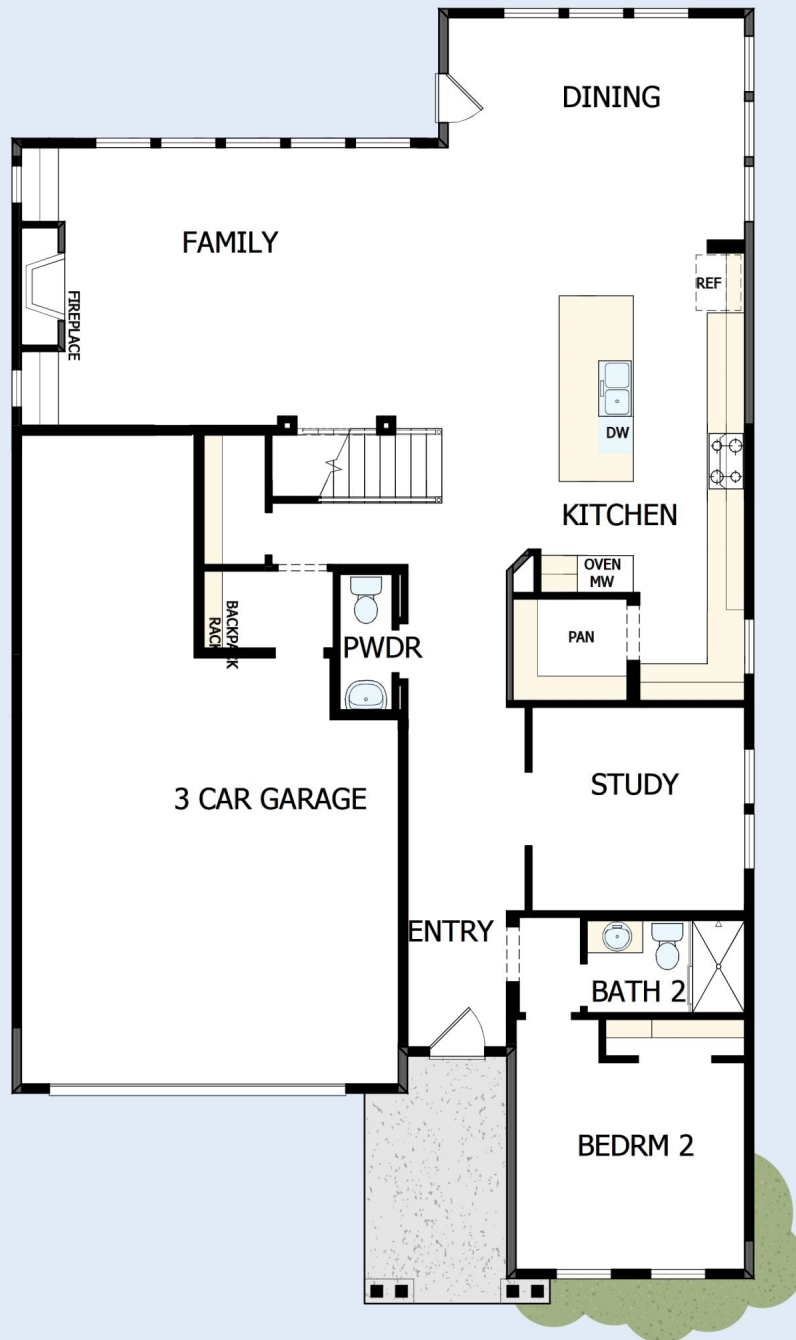
### **We're living our fairytale thanks to David Weekley**

We can't say enough about the level of quality and care we received while building our home. Our builder was with us every step of the way to make sure our every need and desire was being met! The team truly went above and beyond at every turn to give us the home of our dreams! We will definitely recommend David Weekley to anyone looking to build a new home!

# THE GREENFARM

11225 SHREVEPORT DRIVE

3,684 sq. ft. • 5 Bedrooms • 4 Full Baths • 1 Half Bath • 3 Car Garage



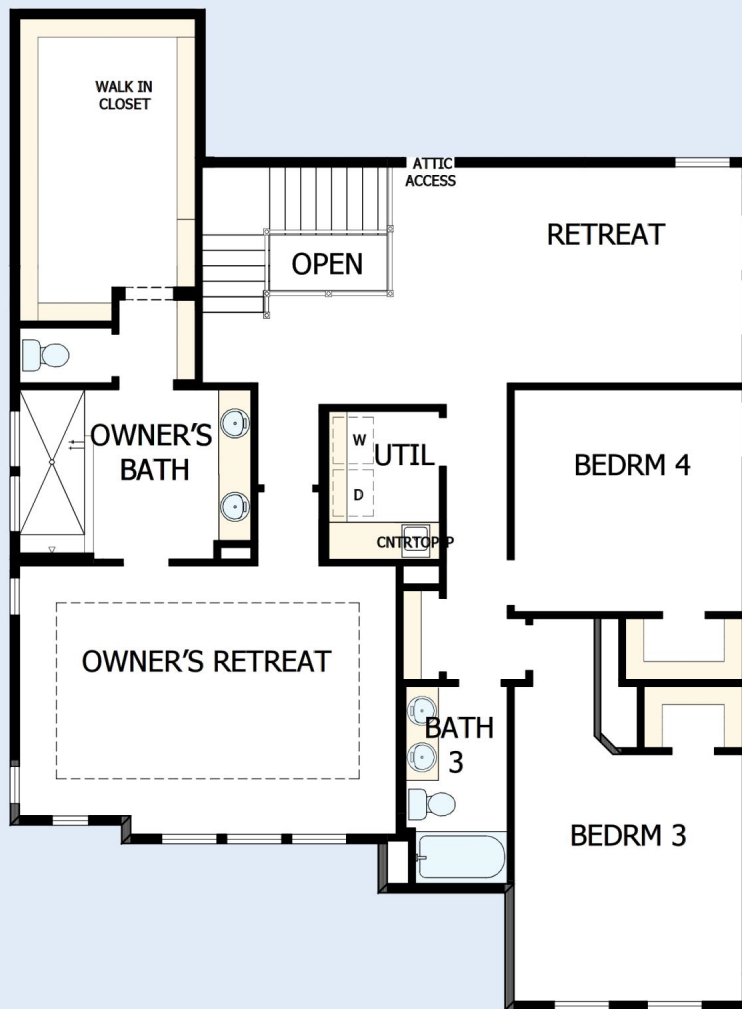
36280112 CHA

9/24/2025

DavidWeekleyHomes.com

# THE GREENFARM

11225 SHREVEPORT DRIVE



See a David Weekley Homes Sales Consultant for details. Prices, plans, dimensions, features, specifications, materials and availability of homes or communities are subject to change without notice or obligation. Illustrations are artist's depictions only and may differ from completed improvements. Copyright © 2025 David Weekley Homes - All Rights Reserved. Huntersville, NC

DavidWeekleyHomes.com