

# THE CREEKBEND

6351 JENSEN VIEW AVENUE



Exterior A

1,619 sq. ft.

3 Bedrooms

2 Full Baths

1 Half Bath

2 Car Garage

## Perez Family



### Best Homebuying Experience Ever

We have had several homes built in the past by several homebuilders. Our experience with David Weekley was the best we have ever had. The attention to detail and the customer service were exceptional. Both our sales person and Project Manager kept us well informed and treated us like family. Thanks David Weekley

## Crystal W.



### Welcome Home

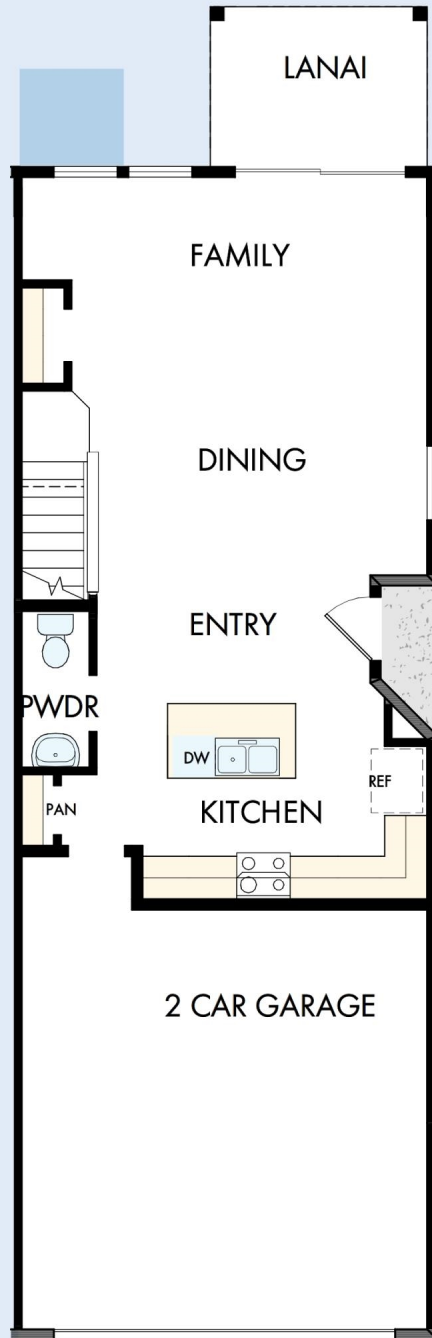
My DWHome's experience has been truly 5-stars! From a floorplan concept, reserving a lot filled with dirt, the homebuilding project, to "Welcome Home", the entire process has been amazing. The team provided regular feedback and were always available to address questions and concerns. I was sold on the quality features. The entire team's availability and service has been exceptional before and after closing. Looking forward to enjoying our new home and neighbors for many years to come!

David Weekley  
Homes

# THE CREEKBEND

6351 JENSEN VIEW AVENUE

1,619 sq. ft. • 3 Bedrooms • 2 Full Baths • 1 Half Bath • 2 Car Garage



39580081 TAM

3/11/2026

DavidWeekleyHomes.com

# THE CREEKBEND

6351 JENSEN VIEW AVENUE



See a David Weekley Homes Sales Consultant for details. Prices, plans, dimensions, features, specifications, materials, and availability of homes or communities are subject to change without notice or obligation. Illustrations are artist's depictions only and may differ from completed improvements. Copyright © 2026 David Weekley Homes - All Rights Reserved. Apollo Beach, FL

[DavidWeekleyHomes.com](http://DavidWeekleyHomes.com)

