

THE MARY VIRGINIA

136 REFLECTIONS AVENUE



Exterior F

2,022 sq. ft.

3 Bedrooms

2 Full Baths

2 Car Garage

Crystal W.



Welcome Home

My DWHomes experience has been truly 5-stars! From a floorplan concept, reserving a lot filled with dirt, the homebuilding project, to "Welcome Home", the entire process has been amazing. The team provided regular feedback and were always available to address questions and concerns. I was sold on the quality features. The entire team's availability and service has been exceptional before and after closing. Looking forward to enjoying our new home and neighbors for many years to come!

Perez Family



Best Homebuying Experience Ever

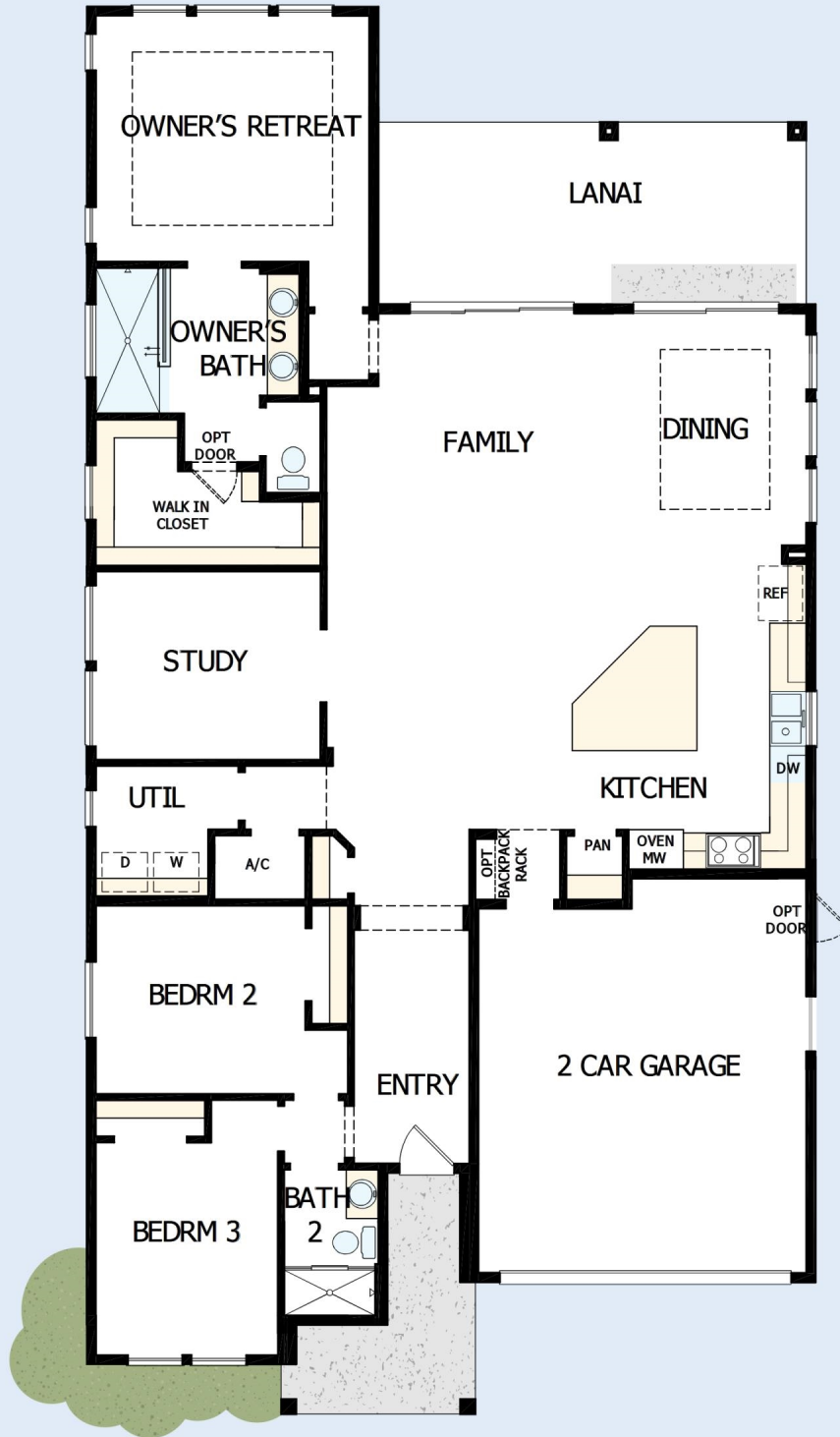
We have had several homes built in the past by several homebuilders. Our experience with David Weekley was the best we have ever had. The attention to detail and the customer service were exceptional. Both our sales person and Project Manager kept us well informed and treated us like family. Thanks David Weekley

**David Weekley
Homes**

THE MARY VIRGINIA

136 REFLECTIONS AVENUE

2,022 sq. ft. • 3 Bedrooms • 2 Full Baths • 2 Car Garage



49270393 JAC

1/6/2025

See a David Weekley Homes Sales Consultant for details. Prices, plans, dimensions, features, specifications, materials, and availability of homes or communities are subject to change without notice or obligation. Illustrations are artist's depictions only and may differ from completed improvements. Copyright © 2025 David Weekley Homes - All Rights Reserved. Ponte Vedra Beach, FL

DavidWeekleyHomes.com

