

THE HOMESTEAD

602 TEXAS SAGE LOOP



Exterior D

Chelsea



Incredible Experience, Incredible Home!

We trusted the team from Day 1 and couldn't have asked for a better experience. The attention to detail was fantastic, and we felt as if the DWH team had a personal interest in the success of our home. The process was well defined and every team member set very clear expectations. We love every inch of our home, and we'd definitely recommend DWH!

Meg S.



Truly treated us like family!!!

We enjoyed every part of the home building process. It was amazing! Our builder was always keeping us informed and really went above and beyond to ensure that we love our home. Our warranty rep is outstanding and continues to take care of our every need. I couldn't have asked for a better experience. Our builder and warranty rep continue to be there for us as a family. While our interactions with the DW Family have been highly professional, we are also lucky enough to be able to call them some of our greatest friends! Wouldn't change a thing!

1,477 sq. ft.

3 Bedrooms

2 Full Baths

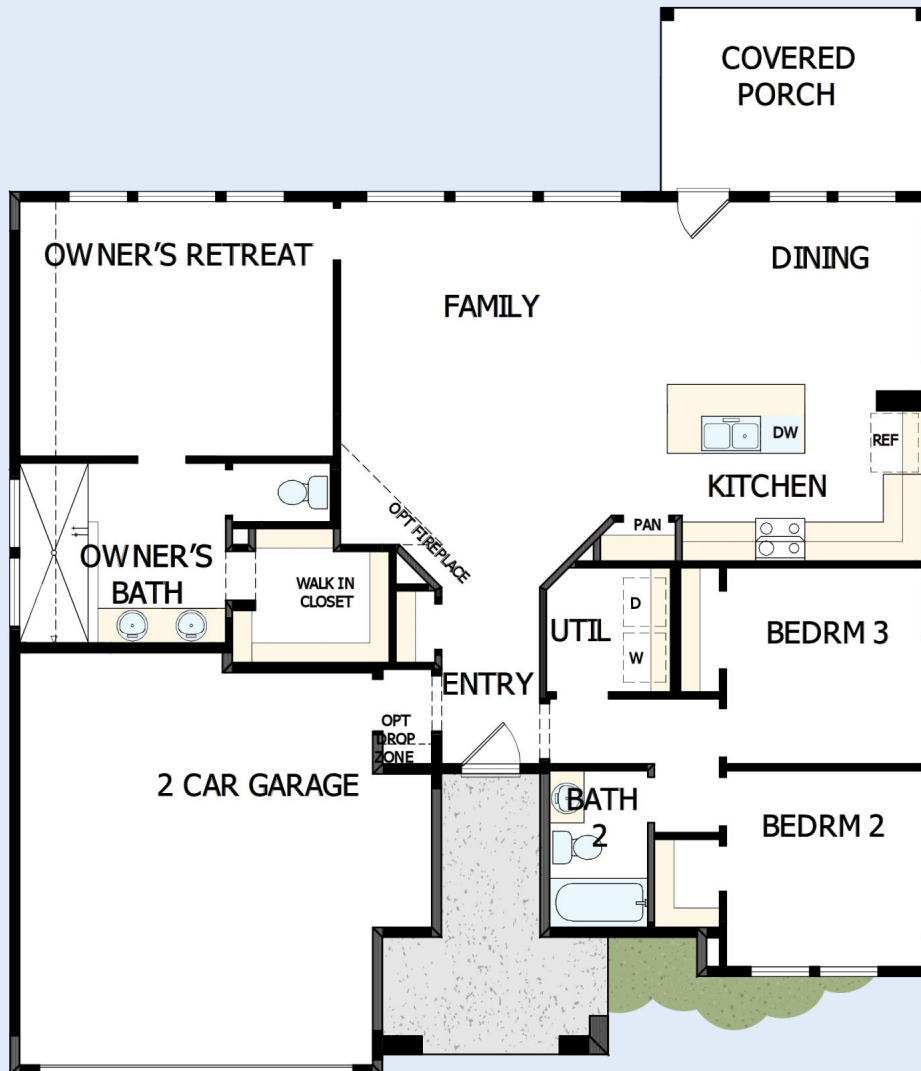
2 Car Garage

David Weekley
Homes

THE HOMESTEAD

602 TEXAS SAGE LOOP

1,477 sq. ft. • 3 Bedrooms • 2 Full Baths • 2 Car Garage



22040125 AUS

2/21/2025

See a David Weekley Homes Sales Consultant for details. Prices, plans, dimensions, features, specifications, material and availability of homes or communities are subject to change without notice or obligation. Illustrations are artist's depictions only and may differ from completed improvements. Copyright © 2025 David Weekley Homes - All Rights Reserved. Buda, TX

DavidWeekleyHomes.com

