

# THE BRICKHAVEN

340 TRAILMORE LANE



Exterior F

2,511 sq. ft.

3 Bedrooms

3 Full Baths

2 Car Garage

## Chelsea



### Incredible Experience, Incredible Home!

We trusted the team from Day 1 and couldn't have asked for a better experience. The attention to detail was fantastic, and we felt as if the DWH team had a personal interest in the success of our home. The process was well defined and every team member set very clear expectations. We love every inch of our home, and we'd definitely recommend DWH!

## Lauren L.



### Home is where the heart is.

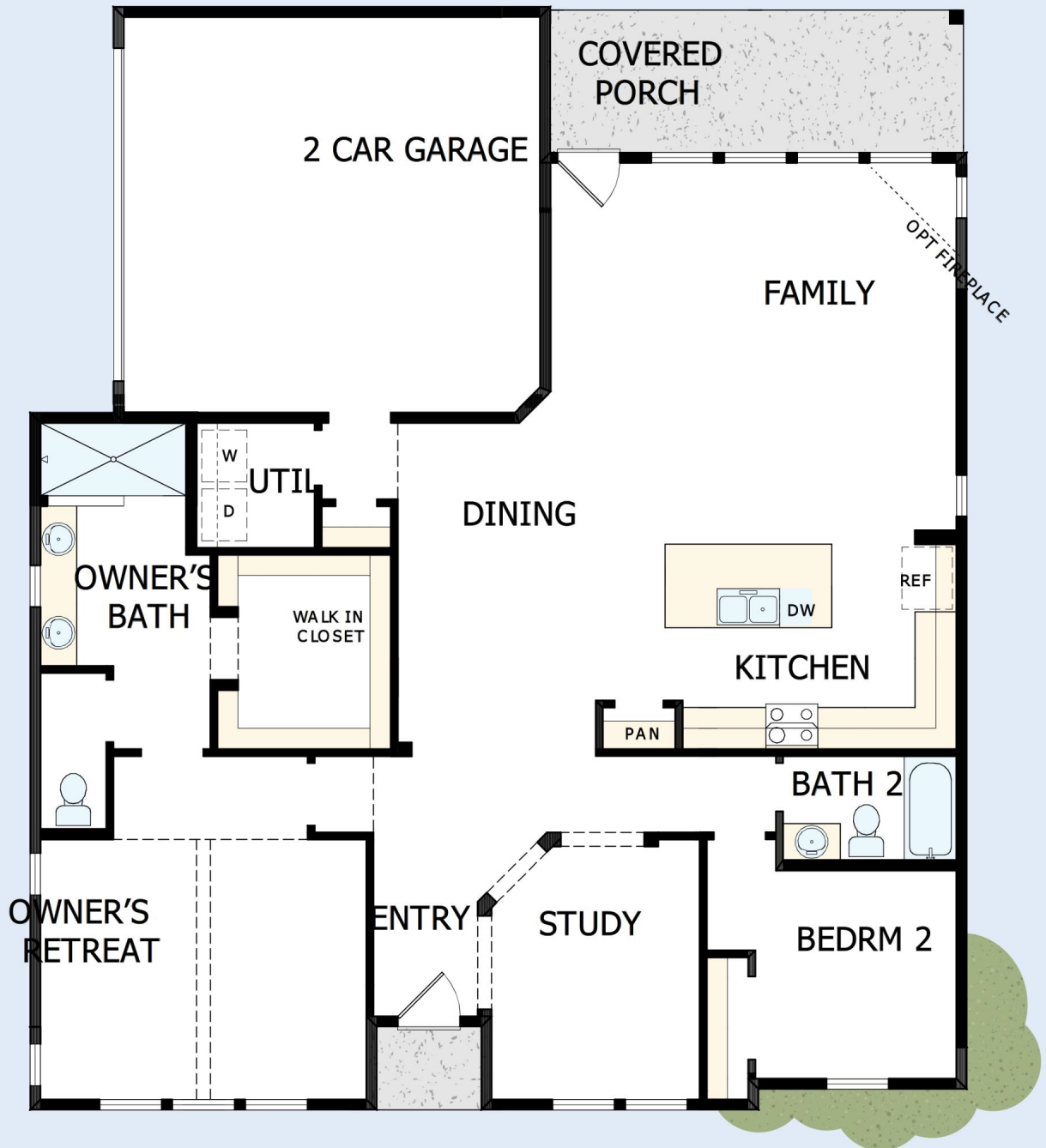
Years we waited to buy a house. Painful years of raising children in someone else's home. Years I got to ponder what it would be like to have something of my own. I envisioned my children sitting in their home, playing in their rooms, running through their yard...and the days of waiting were over, all of my research paid off. We bought the house of my dreams and were given the best sales associate and builder, down to my warranty specialist. Everything was easy and seamless. I felt like we were working together, like a team. Now, I have a beautiful house that I know was built with integrity. I could not be more grateful.

David Weekley  
Homes

# THE BRICKHAVEN

340 TRAILMORE LANE

2,511 sq. ft. • 3 Bedrooms • 3 Full Baths • 2 Car Garage



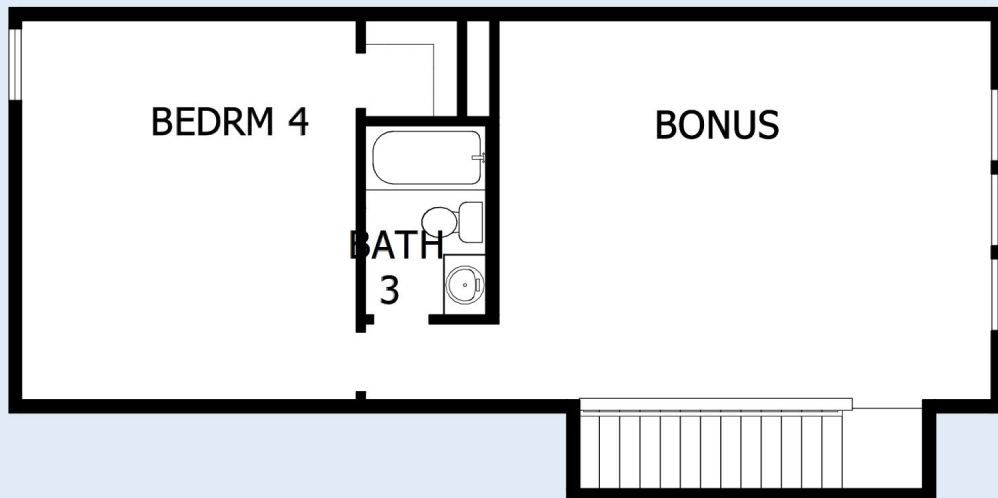
45580001 CSC

4/7/2025

DavidWeekleyHomes.com

# THE BRICKHAVEN

340 TRAILMORE LANE



See a David Weekley Homes Sales Consultant for details.  
Prices, plans, dimensions, features, specifications, materials,  
and availability of homes or communities are subject to  
change without notice or obligation. Illustrations are artist's  
depictions only and may differ from completed improvements.  
Copyright © 2025 David Weekley Homes - All Rights Reserved.  
Summerville, SC

**DavidWeekleyHomes.com**