

THE BECKLEY

1447 PARK PATH DRIVE



2,350 sq. ft.

3 Bedrooms

2 Full Baths

1 Half Bath

3 Car Garage

Exterior F

Meg S.



Truly treated us like family!!!

We enjoyed every part of the home building process. It was amazing! Our builder was always keeping us informed and really went above and beyond to ensure that we love our home. Our warranty rep is outstanding and continues to take care of our every need. I couldn't have asked for a better experience. Our builder and warranty rep continue to be there for us as a family. While our interactions with the DW Family have been highly professional, we are also lucky enough to be able to call them some of our greatest friends! Wouldn't change a thing!

Gigi and Papa



THE BESTest - Better than all the rest!

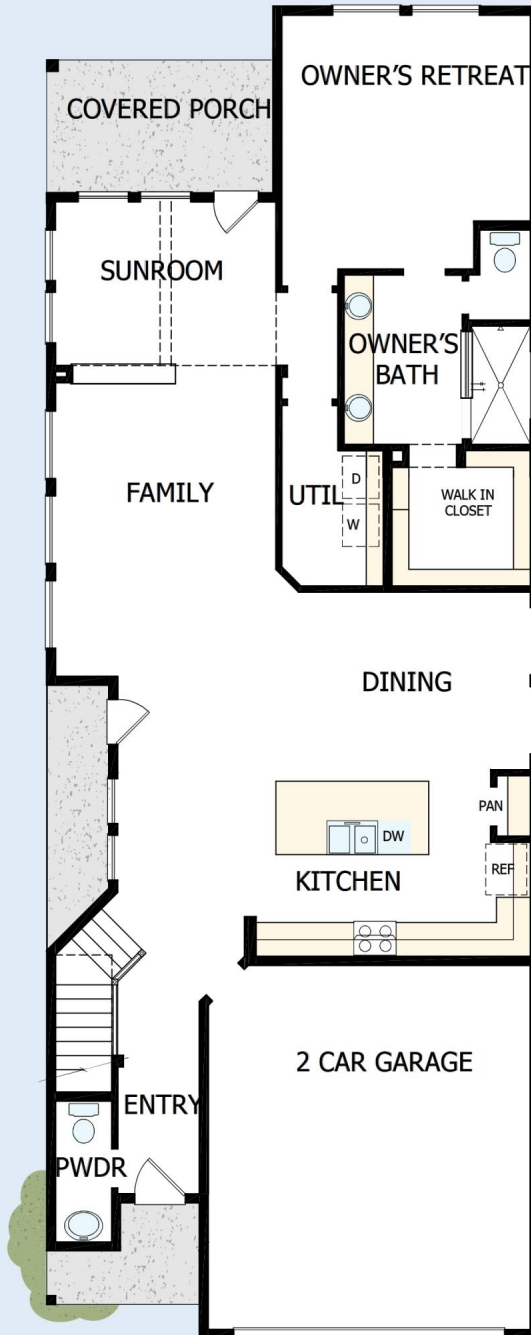
What an awesome and personal family-oriented company! From touring model homes to selecting "THE ONE" just for us, the experience was delightful and amazing! The entire David Weekley team has been exceptionally wonderful and always available to address any issues we encountered. We have been amazed and impressed by the "Service after the Sale" approach by the David Weekley staff. We would recommend David Weekley homes to anyone. We feel like we are an important member of the Weekley family!

David Weekley
Homes

THE BECKLEY

1447 PARK PATH DRIVE

2,350 sq. ft. • 3 Bedrooms • 2 Full Baths • 1 Half Bath • 3 Car Garage



14590048 HOU

1/6/2025

DavidWeekleyHomes.com

THE BECKLEY

1447 PARK PATH DRIVE



See a David Weekley Homes Sales Consultant for details. Prices, plans, dimensions, features, specifications, material and availability of homes or communities are subject to change without notice or obligation. Illustrations are artist's depictions only and may differ from completed improvements. Copyright © 2025 David Weekley Homes - All Rights Reserved. Missouri City, TX

DavidWeekleyHomes.com

