

THE SUMMERLYN

4345 ROUSH AVE



Exterior A

1,390 sq. ft.

2 Bedrooms

2 Full Baths

1 Half Bath

1 Car Garage

Shane



We're living our fairytale thanks to David Weekley

We can't say enough about the level of quality and care we received while building our home. Our builder was with us every step of the way to make sure our every need and desire was being met! The team truly went above and beyond at every turn to give us the home of our dreams! We will definitely recommend David Weekley to anyone looking to build a new home!

Greg and Jane



Exceptional service and experience!

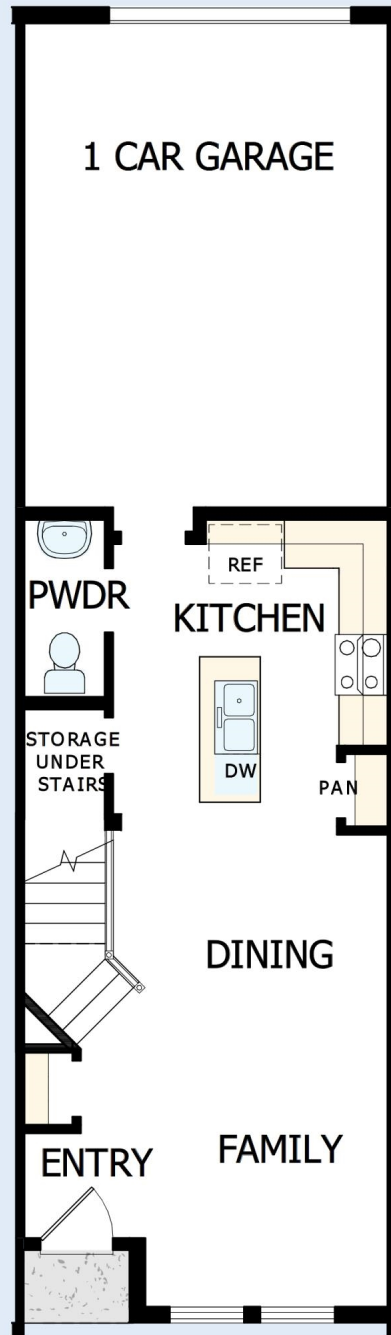
We have been fortunate enough to build several new homes and this was by far the best experience that we've encountered. We actually debated whether or not we wanted to go through the home building process again or simply purchase a pre-owned home or a finished new home. So pleased we built! Our Weekley team (sales associate, design consultant and builder) was very professional, courteous, attentive, responsive and pro-active from beginning to end. They've all become our adopted kids! Great overall experience!

David Weekley
Homes

THE SUMMERLYN

4345 ROUSH AVE

1,390 sq. ft. • 2 Bedrooms • 2 Full Baths • 1 Half Bath • 1 Car Garage



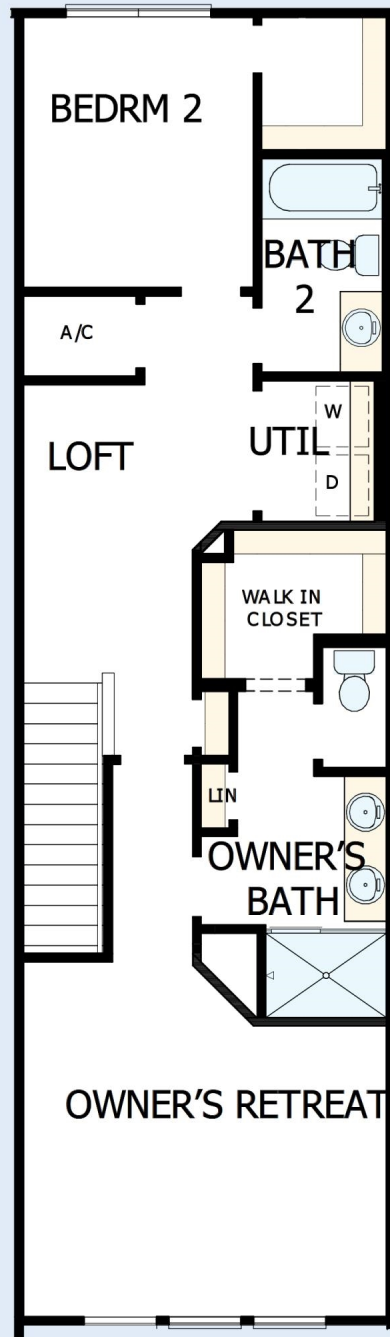
30270015 ORL

10/22/2025

DavidWeekleyHomes.com

THE SUMMERLYN

4345 ROUSH AVE



See a David Weekley Homes Sales Consultant for details. Prices, plans, dimensions, features, specifications, materials, and availability of homes or communities are subject to change without notice or obligation. Illustrations are artist's depictions only and may differ from completed improvements. Copyright © 2025 David Weekley Homes - All Rights Reserved. Orlando, FL

DavidWeekleyHomes.com