

# THE LESLIE

14685 105TH CIRCLE NORTH



## Exterior C

2,544 sq. ft.

2 Bedrooms

3 Full Baths

2 Car Garage

### Chelsea



#### Incredible Experience, Incredible Home!

We trusted the team from Day 1 and couldn't have asked for a better experience. The attention to detail was fantastic, and we felt as if the DWH team had a personal interest in the success of our home. The process was well defined and every team member set very clear expectations. We love every inch of our home, and we'd definitely recommend DWH!

### Shane



#### We're living our fairytale thanks to David Weekley

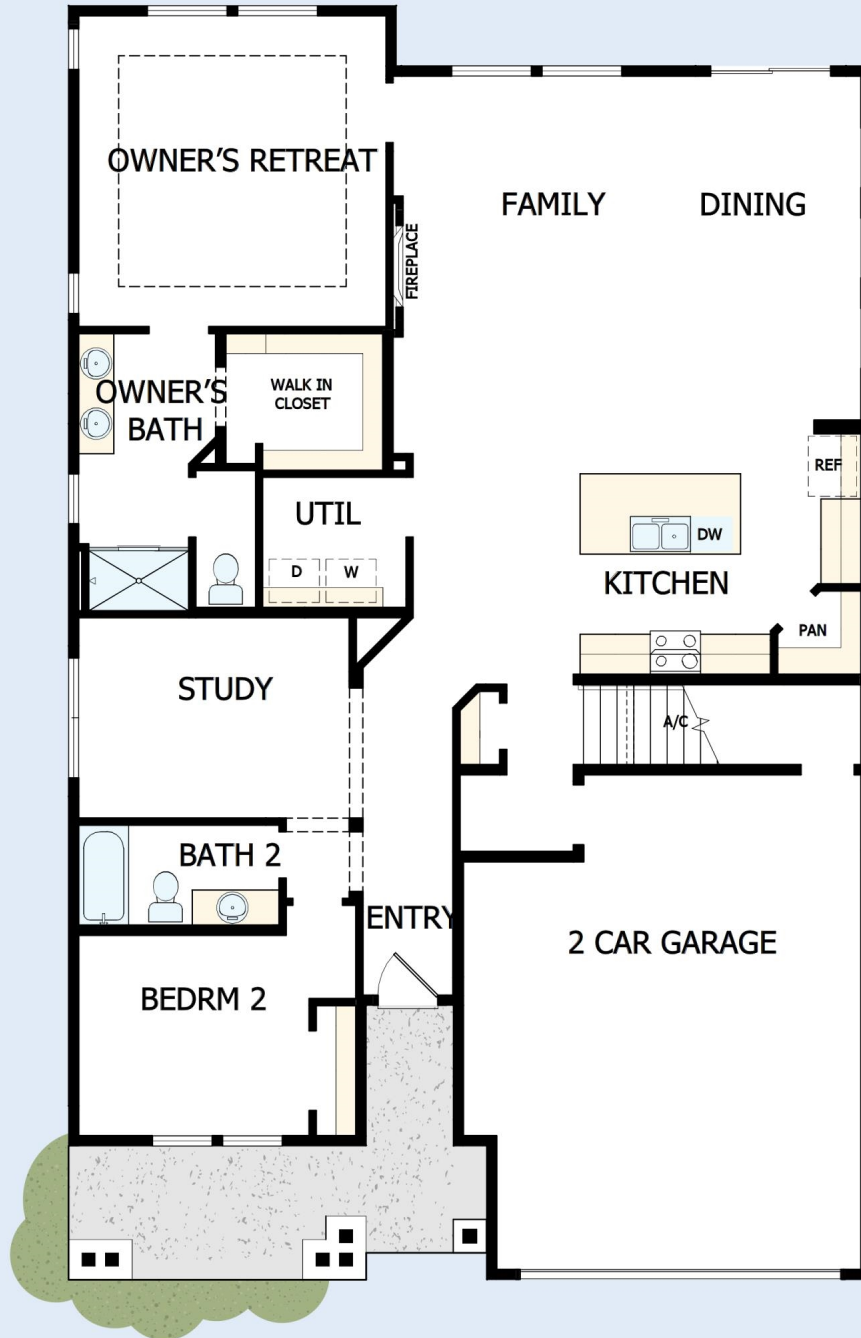
We can't say enough about the level of quality and care we received while building our home. Our builder was with us every step of the way to make sure our every need and desire was being met! The team truly went above and beyond at every turn to give us the home of our dreams! We will definitely recommend David Weekley to anyone looking to build a new home!

David Weekley  
Homes

# THE LESLIE

14685 105TH CIRCLE NORTH

2,544 sq. ft. • 2 Bedrooms • 3 Full Baths • 2 Car Garage



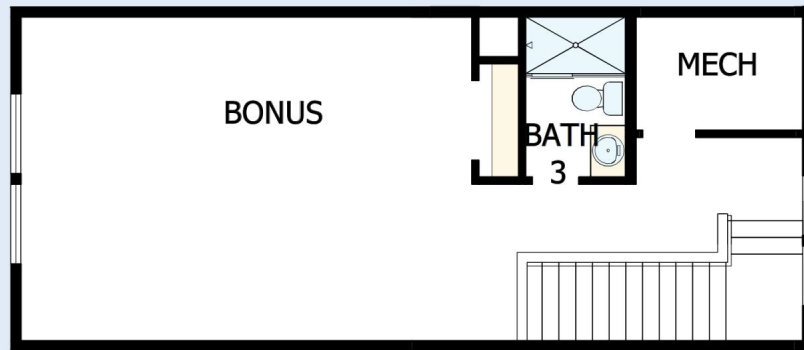
60180022 MSP

11/19/2024

DavidWeekleyHomes.com

# THE LESLIE

14685 105TH CIRCLE NORTH



See a David Weekley Homes Sales Consultant for details. Prices, plans, dimensions, features, specifications, material and availability of homes or communities are subject to change without notice or obligation. Illustrations are artist's depictions only and may differ from completed improvements. Copyright © 2024 David Weekley Homes - All Rights Reserved. Maple Grove, MN

[DavidWeekleyHomes.com](http://DavidWeekleyHomes.com)

