

# THE RIVERDALE

2090 SPOTTED FAWN DRIVE



Exterior A

2,754 sq. ft.

3 Bedrooms

3 Full Baths

3 Car Garage

## Shane



### We're living our fairytale thanks to David Weekley

We can't say enough about the level of quality and care we received while building our home. Our builder was with us every step of the way to make sure our every need and desire was being met! The team truly went above and beyond at every turn to give us the home of our dreams! We will definitely recommend David Weekley to anyone looking to build a new home!

## Perez Family



### Best Homebuying Experience Ever

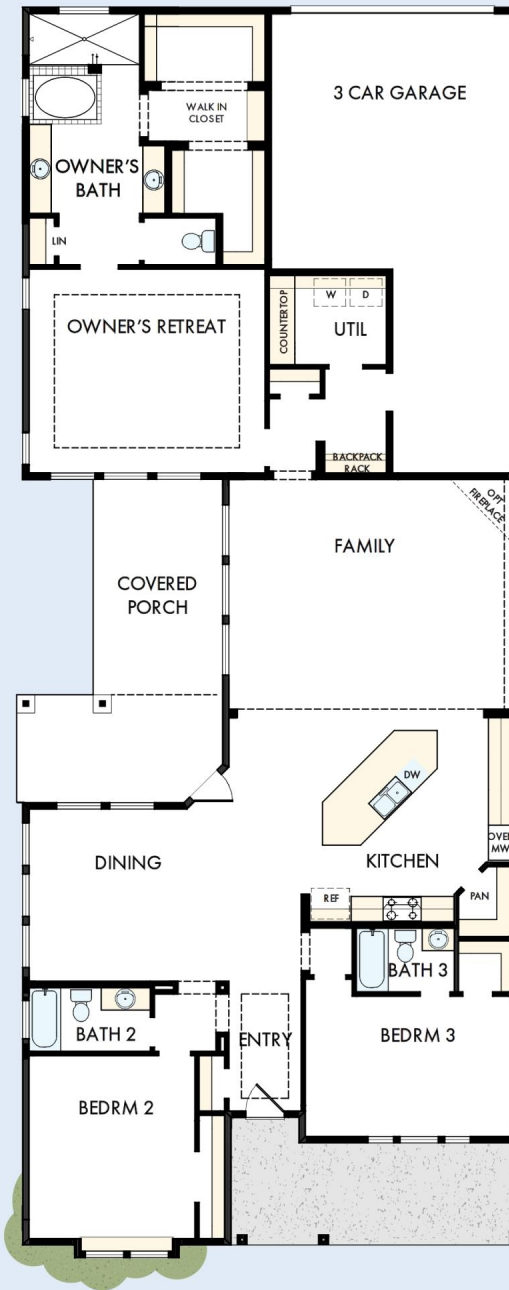
We have had several homes built in the past by several homebuilders. Our experience with David Weekley was the best we have ever had. The attention to detail and the customer service were exceptional. Both our sales person and Project Manager kept us well informed and treated us like family. Thanks David Weekley

Encore  
by David Weekley Homes

# THE RIVERDALE

2090 SPOTTED FAWN DRIVE

2,754 sq. ft. • 3 Bedrooms • 3 Full Baths • 3 Car Garage



19100079 DAL

3/23/2026

See a David Weekley Homes Sales Consultant for details. Prices, plans, dimensions, features, specifications, materials, and availability of homes or communities are subject to change without notice or obligation. Illustrations are artist's depictions only and may differ from completed improvements. Copyright © 2026 David Weekley Homes - All Rights Reserved. Arlington, TX

**Encore**  
by David Weekley Homes

